

SEARCH AND RESCUE DEPARTMENT

I. Mission

The Search and Rescue Department is committed to providing safe and reliable airborne response to medical evacuation (medevac), search and rescue missions, and other emergencies.

We strive to work collaboratively with NSB SAR volunteers and other agencies across the North Slope region for ground, air and water search and rescue missions.

II. Department Responsibilities

The NSB SAR Department is required by federal regulations to operate aircraft in accordance with:

14 CFR Part 61: Certification: Pilots, flight instructors and ground instructors;

14 CFR Part 67: Medical standards and certification;

14 CFR Part 91: General operating and flight rules;

14 CR Part 43: Maintenance, preventative maintenance, rebuilding and alterations.

SAR currently operates four (4) aircraft; two (2) rotary wing aircraft and two (2) fixed wing aircraft. All are capable of day, night, visual and instrument meteorological conditions. All are utilized for both SAR and medevac missions.

SAR has four (4) divisions: **Administration, Flight, Maintenance and SAR Coordination.**

SAR combines emergency response efforts with the NSB Fire Department Medevac Division and NSB SAR volunteers.

A. Administration Division

This division is responsible for forecasting and monitoring the department's financials which includes personnel, supplies, travel, training and communications. The SAR Division Manager works closely with management to manage the budget and insuring accountability.

B. Flight Division

This Division is managed by the Chief Pilot. Coordination of flights and flight crews, training, duty time, and on-call schedules are managed by the Chief Pilot.

The Flight Division and Fire Department's Medevac Division is a combined effort to provide state certified critical care air ambulance as well as advanced and basic life support medical services for the North Slope region.

C. SAR Coordination Division

Coordination is responsible for immediate response to each SAR emergency throughout the North Slope.

Combined with the knowledge of the land and subsistence lifestyle, these are essential elements of the SAR Coordinator.

The SAR Coordinator assists SAR volunteers to effectively prepare for and conduct SAR missions along with the effective use of SAR equipment to respond.

D. Maintenance Division

The Aircraft Maintenance Division supports flight operations by maintaining the Department's fleet of four (4) aircraft comprised of two rotary wing aircraft and two fixed wing aircraft. The aircraft are maintained to standards of the Federal Aviation Regulations (FAR) 14 CFR Part 91, Subpart E. The Maintenance Division supports flight operations on a 24/7 basis utilizing two (2) shifts of mechanics who work on a 14-day rotational basis. Maintenance personnel are utilized as crew members, and responsible for maintaining ramp and building areas, ground support equipment and conduct fueling operations in accordance with FAA regulation 14 CFR Part 139.

III. Goals and Objectives

Goal 1: Recruitment and Retention

Obj 1.1: Recruit and retain a total of fourteen (14) FAA qualified pilots supervised by the Chief Pilot and two (2) Lead pilots.

Obj 1.2: Recruit and retain a total of ten (10) FAA qualified aircraft mechanics supervised by the Chief of Maintenance and two (2) Lead mechanics.

Goal 2: Emergency Response

Obj 1.1: When possible, maintain at least one fixed wing and one rotary wing aircraft out of a fleet of four aircraft to conduct the Department's stated mission.

Obj 1.2: Maintain and refine emergency response operations by establishing regular communication, planning and conducting operations/training with State, Federal and local emergency response organizations.

Obj 1.3: Maintain close working relationships with the appropriate NSB departments and other agencies (to include the Alaska Rescue Coordination Center) to improve regional emergency response.

Goal 3: Maintain Department's Safety Program

Obj 1.1: Continue to develop and enhance the Department's Safety Program that includes incident reporting, incident investigation and dissemination of results of those investigations to increase the safety culture within the organization.

Obj 1.2: The Safety Manager will maintain the Department's Safety Plan to include flight, maintenance and SAR facilities, OSHA and hazardous materials spills and response actions.

Obj 1.3: Maintain a plan of safety audits and inspections of Department equipment, systems of operations and facilities.

Obj 1.4: Ensure a zero aircraft accident rate by providing the safest and the most efficient aircraft services available for the North Slope.

Goal 4: Training and Development

Obj 1.1: Ensure all SAR personnel receive training opportunities within their profession to maintain and improve their skills and abilities to better support operations for the North Slope Borough.

Obj 1.2: Maintain SAR's internal training program on essential elements of emergency response for all personnel and SAR volunteers.

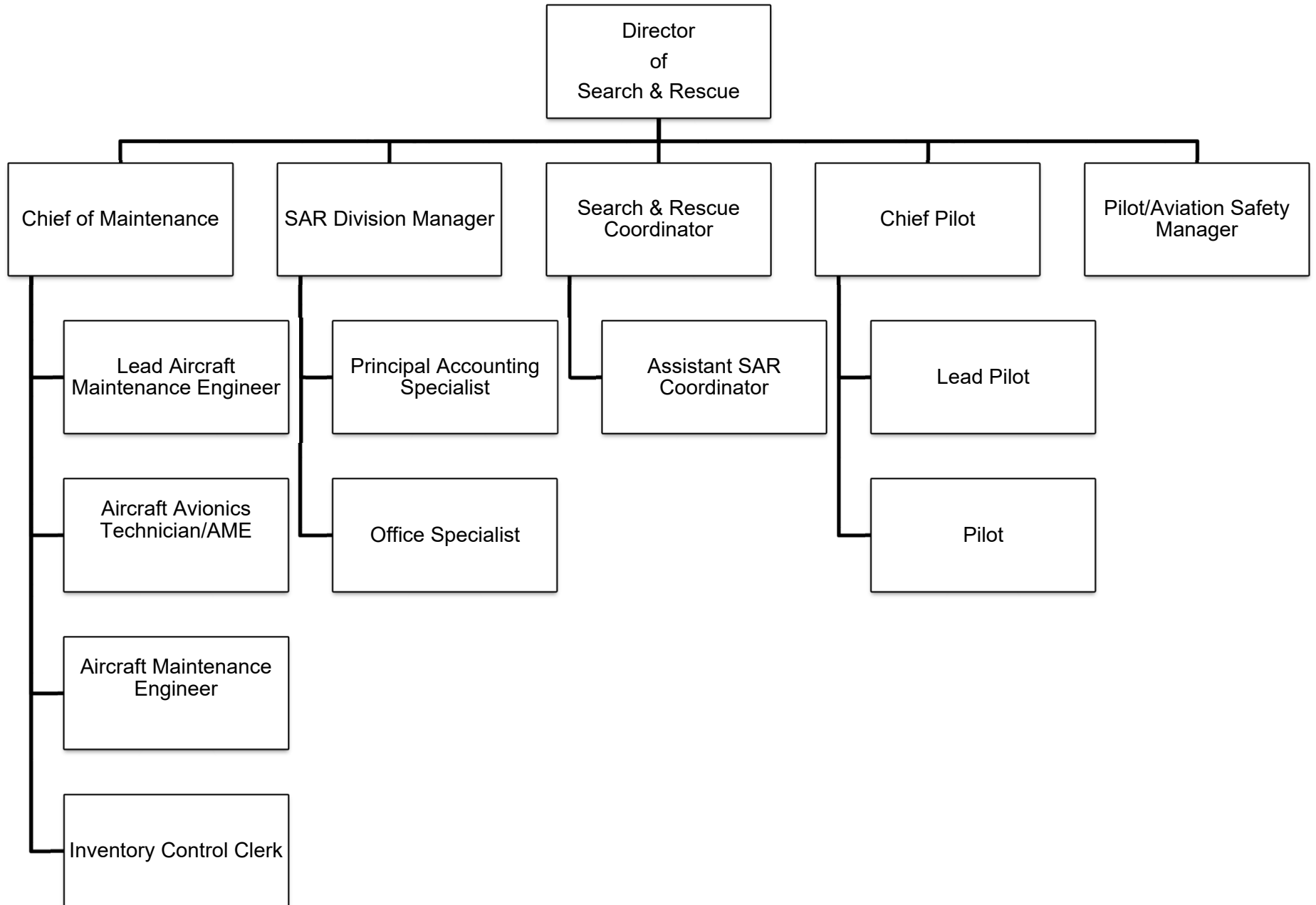
Goal 5: Continuously improve SAR Coordination

Obj 1.1: Assist SAR volunteers across the North Slope region with training requirements, equipment needs, facilities maintenance, and communications.

Obj 1.2: Openly communicate on a consistent basis with all SAR volunteers in all North Slope communities regarding SAR missions.

Obj 1.3: Maintain the Personal Locator Beacon (PLB) Program and continually assess the North Slope communities PLB needs combined with continuous community outreach about the program.

**North Slope Borough
Department of Search & Rescue**



SEARCH & RESCUE
FY 2026-2027
Operating Budget Summary

Business Unit and Division	FTE FY25-26	FTE FY26-27	FY 25-26 Total Budget	Personal Services	Contractual Services	Supplies	Equipment	Other	FY 26-27 Total Budget	Change from Prior Year	% Change
4405 - SEARCH/RESCUE CENTRAL OFF	39	41	18,929,064	8,630,862	8,873,668	956,960	434,600	0	18,896,090	(32,974)	(0.2)%
Grand Total	39	41	18,929,064	8,630,862	8,873,668	956,960	434,600	0	18,896,090	(32,974)	(0.2)%

SEARCH & RESCUE

Department Total

Expenditure Type	Actual Year 2023-2024	Actual Year 2024-2025	Budget 2025-2026	Actual 6 months 2025-2026	Budget 2026-2027	Budget Variance	% Change
6100 Personal Services							
Total Permanent Wages	2,815,675	3,460,947	3,111,186	1,910,574	3,422,671	311,485	10.0%
Total Permanent Overtime Wages	1,510,634	1,560,652	1,610,832	887,252	1,677,213	66,381	4.1%
Total Temporary Wages	48,306	96,759	41,042	40,662	54,208	13,166	32.1%
Total Temporary Overtime Wages	29,789	41,606	36,109	23,335	48,084	11,975	33.2%
Total Benefits	3,685,758	4,098,625	3,172,624	1,480,454	3,428,686	256,062	8.1%
Total Personal Services	8,090,162	9,258,589	7,971,793	4,342,276	8,630,862	659,069	8.3%
6200 Contractual Services							
Total Communications	194,221	218,770	208,445	56,244	224,165	15,720	7.5%
Total Contributions & Municipal Support	0	0	0	0	0	0	0.0%
Total Maintenance Services	1,726,006	2,469,013	2,290,800	1,372,226	2,633,000	342,200	14.9%
Total Insurance & Bonding Reserves	4,297,151	3,624,907	4,636,864	1,023,215	4,636,864	0	0.0%
Total Professional Services	46,387	300,125	0	8,268	0	0	0.0%
Total Rents and Utilities	149,358	163,803	166,602	93,662	166,602	0	0.0%
Total Travel and Lodging	407,134	405,016	835,370	208,226	394,757	(440,613)	(52.7)%
Total Other Services & Expenses	881,212	718,597	886,230	464,573	818,280	(67,950)	(7.7)%
Total Contractual Services	7,701,470	7,900,232	9,024,311	3,226,414	8,873,668	(150,643)	(1.7)%
6500 Supplies							
Total Fuel	920,228	865,457	1,433,960	657,636	833,960	(600,000)	(41.8)%
Total Supplies-Buildings & Grounds	15,843	11,175	0	2,323	0	0	0.0%
Total Supplies-Non-Buildings & Grounds	84,925	82,984	109,000	73,202	123,000	14,000	12.8%
Total Supplies	1,020,996	959,617	1,542,960	733,161	956,960	(586,000)	(38.0)%
6700 Equipment & Replacement Parts							
Total New Equipment Under \$5,000	4,831	17,421	0	6,613	0	0	0.0%
Total Equipment & Parts Under \$5,000	203,803	229,271	210,000	66,401	233,000	23,000	11.0%
Total Equipment & Parts Over \$5,000	167,545	523,647	180,000	93,992	201,600	21,600	12.0%
Total Equipment & Replacement Parts	376,179	770,339	390,000	167,006	434,600	44,600	11.4%
Grand Total	17,188,807	18,888,775	18,929,064	8,468,857	18,896,090	(32,974)	(0.2)%

Search and Rescue Total

6100 Personal Services

	FTE	FTE	FTE	Position		Budget	Budget	Change	%
	FY 25	FY 26	FY 27	Range	# Months	FY 26	FY 27	Amount	Change
Director of Search and Rescue	1	1	1	42	12	190,462	198,081	7,619	4.0%
Chief Pilot - Rotational	1	1	1	39	12	184,275	224,275	40,000	21.7%
Chief of Maintenance - Rotational	1	1	1	37	12	183,858	189,971	6,113	3.3%
SAR Division Manager	1	1	1	34	12	138,032	148,015	9,983	7.2%
Search & Rescue Coordinator	1	1	1	33	12	113,935	123,600	9,665	8.5%
Lead Pilot - Rotational	2	2	2	32	12	146,658	154,356	7,698	5.2%
Lead Aircraft Maintenance Engineer - Rotational	2	2	2	31	12	131,629	141,116	9,487	7.2%
Pilot /Aviation Safety Manager- Rotational	1	1	1	31	12	61,290	64,684	3,394	5.5%
Aircraft Avionics Tech/AME - Rotational	1	1	2	29	12	62,492	115,636	53,144	85.0%
Pilot - Rotational	10	10	10	29	12	640,356	666,769	26,413	4.1%
Aircraft Maintenance Engineer - Rotational	7	7	7	28	12	351,897	374,764	22,867	6.5%
Assistant Search & Rescue Coordinator	3	7	8	28	12	637,932	758,614	120,682	18.9%
Principal Accounting Specialist	2	2	2	25	12	150,911	150,071	(840)	(0.6%)
Office Specialist	0	1	1	21	12	60,162	57,464	(2,698)	(4.5%)
Inventory Control Clerk	0	1	1	20	12	57,297	55,255	(2,042)	(3.6%)

6110 Permanent Wages

6111 Regular Wages	33	39	41			3,111,186	3,422,671	311,485	10.0%
6115 Overtime Wages						1,610,832	1,677,213	66,381	4.1%
Total Permanent Wages						4,722,018	5,099,884	377,866	8.0%

Aircraft Maintenance Engineer - Substitute

0	1	1	28			41,042	54,208	13,166	32.1%
---	---	---	----	--	--	--------	--------	--------	-------

6120 Temporary Wages

6121 Regular Wages	0	1	1			41,042	54,208	13,166	32.1%
6125 Overtime Wages						36,109	48,084	11,975	33.2%
Total Temporary Wages						77,151	102,292	25,141	32.6%

6130 Benefits

6131 Permanent Employee Benefits - 67%						3,163,752	3,416,922	253,170	8.0%
6135 Temporary Employee Benefits - 11.5%						8,872	11,764	2,891	32.6%
Total Benefits						3,172,624	3,428,686	256,061	8.1%

Total Personal Services						7,971,793	8,630,862	659,068	8.3%
--------------------------------	--	--	--	--	--	------------------	------------------	----------------	-------------

SEARCH/RESCUE CENTRAL OFFICE

4405.*

Object Account	Budget FY 2025-2026	Budget FY 2026-2027	Budget Year Variance	Budget Year Variance %
6100 Personal Services				
6110 Permanent Wages				
6111 - REGULAR WAGES-PERMANENT	3,111,186	3,422,671	311,485	10.0
Total Permanent Wages	3,111,186	3,422,671	311,485	10.0
6115 Permanent Overtime Wages				
6115 - OT WAGES-PERMANENT	1,610,832	1,677,213	66,381	4.1
Total Permanent Overtime Wages	1,610,832	1,677,213	66,381	4.1
6120 Temporary Wages				
6121 - REGULAR WAGES-TEMPORARY	41,042	54,208	13,166	32.1
Total Temporary Wages	41,042	54,208	13,166	32.1
6125 Temporary Overtime Wages				
6125 - OT WAGES-TEMPORARY	36,109	48,084	11,975	33.2
Total Temporary Overtime Wages	36,109	48,084	11,975	33.2
6130 Benefits				
6131 - BENEFITS-PERMANENT	3,163,752	3,416,922	253,170	8.0
6135 - BENEFITS-TEMPORARY	8,872	11,764	2,892	32.6
Total Benefits	3,172,624	3,428,686	256,062	8.1
Total Personal Services	7,971,793	8,630,862	659,069	8.3
6200 Contractual Services				
6210 Communications				
6215 - AIRLINE EXPRESS	132,500	132,500	0	0.0
6220 - PHONE/FAX/MODEM	27,300	39,300	12,000	44.0
6229 - OTHER COMMUNICATIONS	48,645	52,365	3,720	7.6
Total Communications	208,445	224,165	15,720	7.5
6250 Maintenance Services				
6255 - AIRCRAFT MAINTENANCE	2,253,800	2,596,000	342,200	15.2
6265 - COPIER MAINTENANCE	7,500	7,500	0	0.0
6275 - FACILITY/AIRPORT MAINT	29,500	29,500	0	0.0
Total Maintenance Services	2,290,800	2,633,000	342,200	14.9
6300 Insurance & Bonding Reserves				
6305 - INSURANCE & BONDING	4,636,864	4,636,864	0	0.0
Total Insurance & Bonding Reserves	4,636,864	4,636,864	0	0.0

SEARCH/RESCUE CENTRAL OFFICE

4405.*

Object Account	Budget FY 2025-2026	Budget FY 2026-2027	Budget Year Variance	Budget Year Variance %
6360 Rents & Utilities				
6365 - NONRESIDENTIAL LEASES	40,422	40,422	0	0.0
6375 - UTIL-ELECTRICITY	61,800	61,800	0	0.0
6376 - NATURAL GAS	44,100	44,100	0	0.0
6380 - WATER/SEWER	20,280	20,280	0	0.0
Total Rents and Utilities	166,602	166,602	0	0.0
6400 Travel & Lodging				
6402 - AIRFARE IN-STATE	555,715	271,557	(284,158)	(51.1)
6403 - AIRFARE OUT-OF-STATE	80,400	56,400	(24,000)	(29.9)
6410 - GROUND TRANSPORTATION	31,380	9,600	(21,780)	(69.4)
6415 - PER DIEM	32,625	13,200	(19,425)	(59.5)
6420 - LODGING	135,250	44,000	(91,250)	(67.5)
Total Travel and Lodging	835,370	394,757	(440,613)	(52.7)
6450 Other Services & Expenses				
6485 - TRAIN/TUITION/CONFERENCE	781,800	700,000	(81,800)	(10.5)
6490 - MEMBERSHIPS DUES/SUBS	102,360	116,210	13,850	13.5
6499 - MISC SERVICES & EXP	2,070	2,070	0	0.0
Total Other Services & Expenses	886,230	818,280	(67,950)	(7.7)
Total Contractual Services	9,024,311	8,873,668	(150,643)	(1.7)
6500 Supplies				
6510 Fuel				
6515 - AIRCRAFT FUEL	1,397,460	797,460	(600,000)	(42.9)
6530 - VEHICLE FUEL	36,500	36,500	0	0.0
Total Fuel	1,433,960	833,960	(600,000)	(41.8)
6600 Supplies-Non-Buildings & Grounds				
6615 - FOOD/WATER/COFFEE/CATER	27,000	27,000	0	0.0
6620 - HOUSEHOLD SUPPLIES	4,000	4,000	0	0.0
6650 - UNIFORMS/PROTECTIVE ITEMS	45,000	45,000	0	0.0
6699 - OTHER NON-BLDG SUPPLIES	33,000	47,000	14,000	42.4
Total Supplies-Non-Buildings & Grounds	109,000	123,000	14,000	12.8
Total Supplies	1,542,960	956,960	(586,000)	(38.0)

SEARCH/RESCUE CENTRAL OFFICE

4405.*

Object Account	Budget FY 2025-2026	Budget FY 2026-2027	Budget Year Variance	Budget Year Variance %
6700 Equipment & Replacement Parts				
6760 Replacement Parts Under \$5,000				
6765 - AIRCRAFT PARTS < \$5000	175,000	196,000	21,000	12.0
6795 - VEHICLE PARTS < \$5000	5,000	7,000	2,000	40.0
6799 - OTHER EQUIP PART <\$5000	30,000	30,000	0	0.0
Total Equipment & Parts Under \$5,000	210,000	233,000	23,000	11.0
6830 Equipment & Parts Over \$5,000				
6835 - AIRCRFT EQP/PART >\$5000	180,000	201,600	21,600	12.0
Total Equipment & Parts Over \$5,000	180,000	201,600	21,600	12.0
Total Equipment & Replacement Parts	390,000	434,600	44,600	11.4
Grand Total	18,929,064	18,896,090	(32,974)	(0.2)