

Nearshore Fish Atlas and ShoreZone Mapping: An Integration of Two Interactive Websites

Nearshore Fish Atlas:



The Atlas contains beach seine catch information on fish assemblages from southeastern Alaska, Prince William Sound, the Aleutian Islands, and the Arctic. The database currently contains nearly 600,000 fish representing 98 species from 841 beach seine hauls.

Mapping Tools



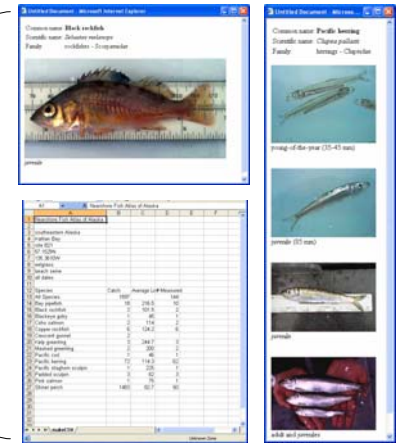
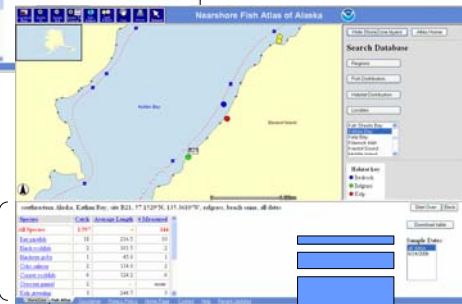
www.fakr.noaa.gov/habitat/FishAtlas

Query Menu

- by region
- by fish species
- by locale
- by habitat

Download
catch data or
various photos
of fish species.

Query Results



View or download
site photos with
metadata.



ShoreZone Habitat Mapping:

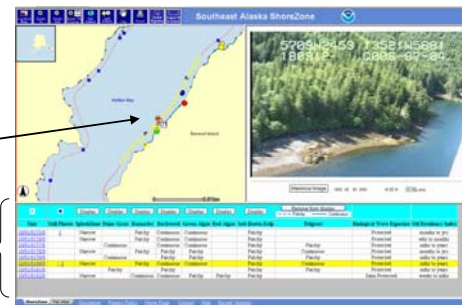


ShoreZone is a coastal habitat mapping and classification system developed from low-altitude, georeferenced aerial imagery. Currently over 25,000 km (~50%) of Alaska's shoreline has been imaged.

Fly the coastline

Select trackline and watch camera icon move through your selection

A query table is generated from your selection.



Video Frame and
Control Panel

**Map Habitat
Classifications**

Habitat classifications are shown for each shore segment. Yellow highlights your current position.



View high resolution
aerial photos.

www.fakr.noaa.gov/habitat/maps/szintro