



# Incidental findings of Lens Yellowing and Cataracts in Beach cast Gray whales (*Eschrichtius robustus*), Alaska

Raphaela Stimmelmayer, North Slope Borough Department of Wildlife Management (NSB-DWM), Utqiagvik, Alaska 99723  
Contact: raphaela.stimmelmayer@north-slope.org

Age related color changes known as lens brunescence (yellow to deep amber) have been previously reported in ageing baleen whales (fin, blue, bowhead whales). Cataracts, a clouding of the lens, are rare in baleen whales with few documented case reports (fin, minke, bowhead whale\* (Stimmelmayer unpubl.data). We report on novel incidental findings of age related lens color changes and cataracts (ageing related ; other (e.g. congenital, trauma) in 2/3 beach cast grey whales (*Eschrichtius robustus*). Contribution of lens disorders (vision impairment) to Cause of Death (COD) is speculative but should be explored.

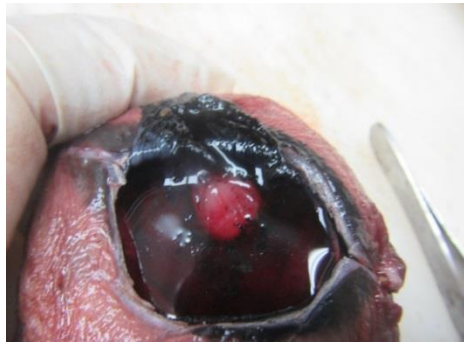


Fig.1. Cornea removed lens in situ

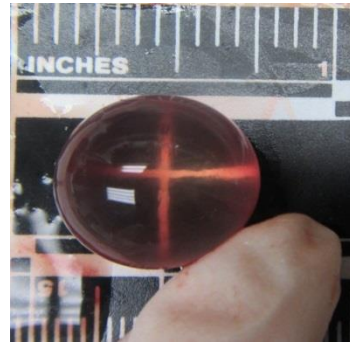


Fig.2a Clear lens

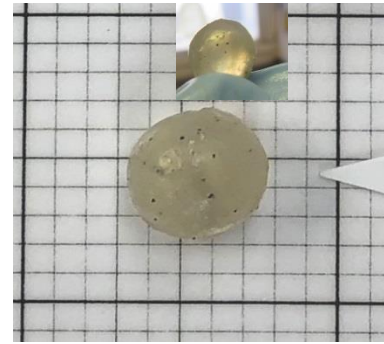


Fig.2b Yellow Lens & cataract

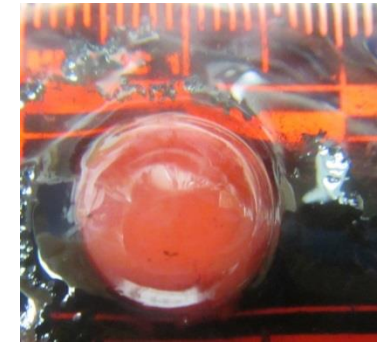


Fig. 2c Bilateral Cataract

ID	2018 BGW 0914 FD Fig. 2a.	2018 BGW 0825 FD Fig. 2b	12BGW1 FD Fig.2c
<b>Age, Sex, TBL</b>	Immature, ♀ 11.7 m (38' 4")	Mature, ♀ 12.3 m (40' 6")	Immature, ♀ 8.2 m (26.9')
<b>COD</b>	Unknown	Orca predation	Blunt trauma
<b>Body Condition</b>	Poor	Poor	Good
<b>Carcass Code</b>	III	III	II



**Acknowledgements:** This study was funded by JH Prescott grant, Coastal Impact Assistance program, Fish and Wildlife Service, US. Department of the Interior ( F12AF01265) and the North Slope Borough. Marine mammal tissue collection occurred under separate authority through the Alaska Marine Mammal Stranding network.