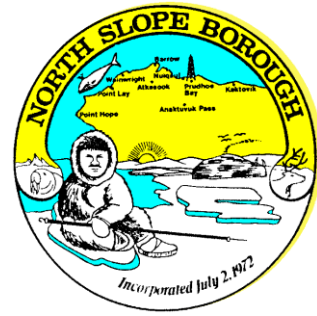


NORTH SLOPE BOROUGH

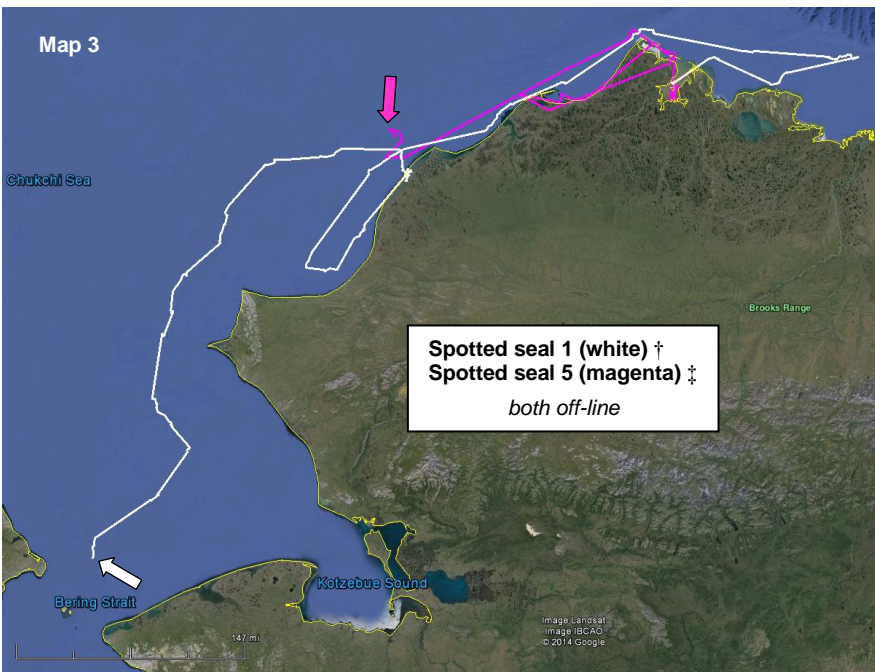
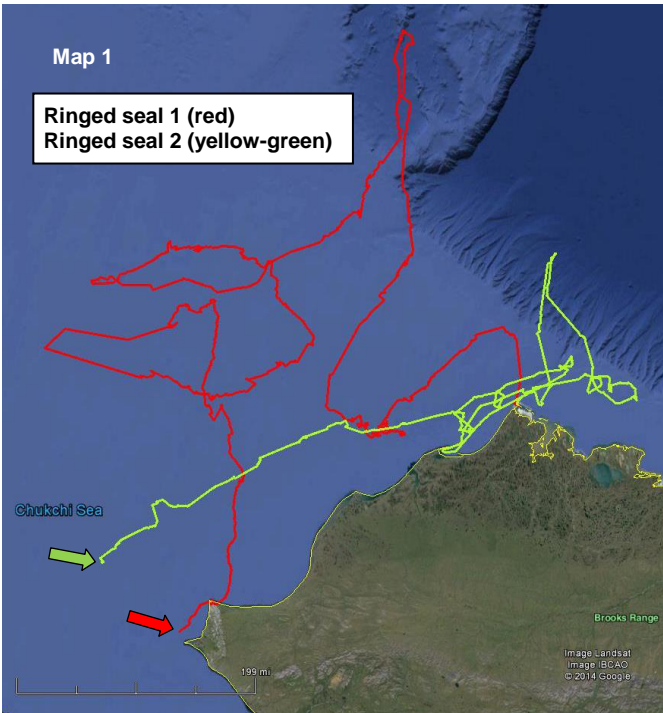
Department of Wildlife Management



Seal Baseline Study (NMFS Permit #15324)

Map 9

Locations as of September 19, 2014



Map 1:

Ringed seal 1 (adult ♂)
tagged on 21-July, 2014
Ringed seal 2 (sub-adult ♂)
tagged on 22-July, 2014

Both ringed seals travelled far offshore and are now working their way south.

Map 2:

Ringed seal 3 (juvenile ♀)
tagged on 30-Aug, 2014

Large northwestern deflection out of Elson Lagoon into the Chukchi Sea is due to a low quality satellite location.

*Last known location transmitted on 3-Sept, 2014.

Map 3:

Spotted seal 1 (sub-adult ♂)
tagged on 29-July, 2014
Spotted seal 5 (juvenile ♂)
tagged on 18-Aug, 2014

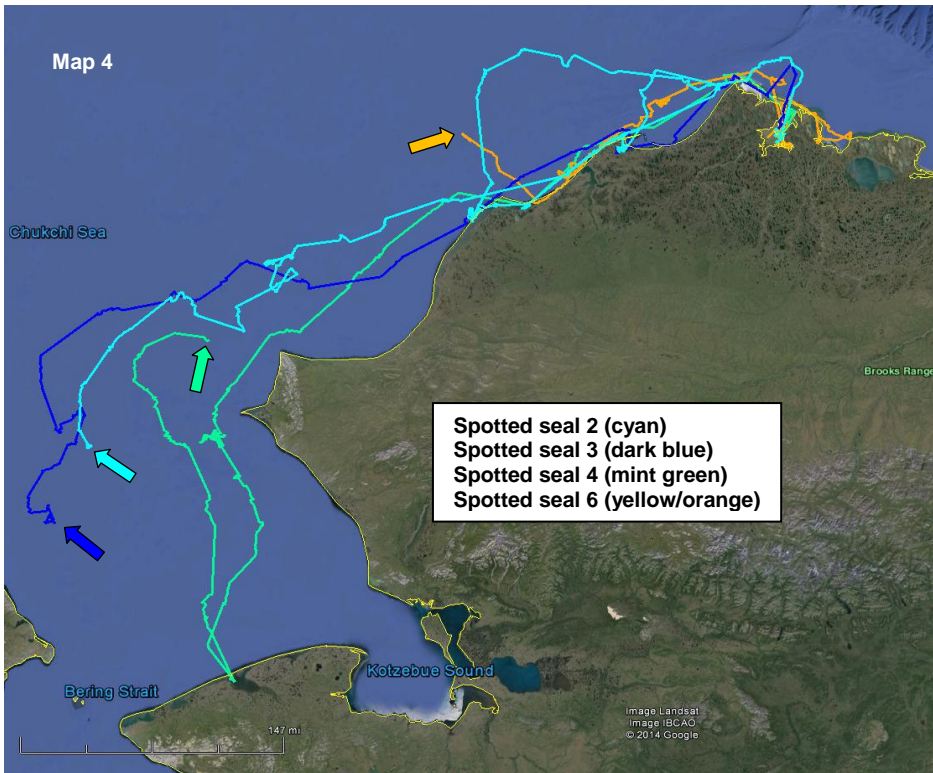
†Last known location transmitted on 1-Sept, 2014.

‡Last known location transmitted on 10-Sept, 2014.

Contact

Andy Von Duyke
Wildlife Biologist

andrew.vonduyke@north-slope.org
907-852-0350

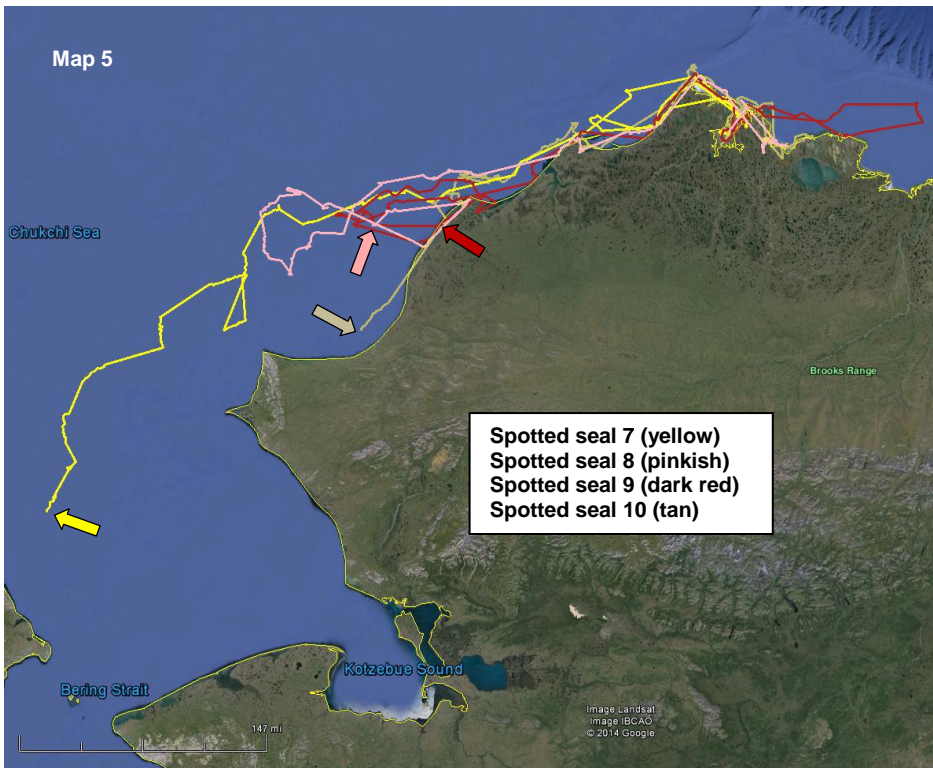


Map 4:

Spotted seal 2 (sub-adult ♂)
tagged on 31-July, 2014

Spotted seal 3 and **Spotted seal 4**
(both sub-adult ♂)
both tagged on 18-Aug, 2014

Spotted seal 6 (adult ♂)
tagged on 19-Aug, 2014



Map 5:

Spotted seal 7 and **Spotted seal 9**
(both sub-adult ♀)
tagged on 19-Aug, 2014

Spotted seal 8
(sub-adult ♂)
tagged on 18-Aug, 2014

Spotted seal 10
(adult ♂)
tagged on 22-Aug, 2014

Maps 3-5:

Note the use of coastal lagoon systems early in the season and offshore foraging later into the summer.