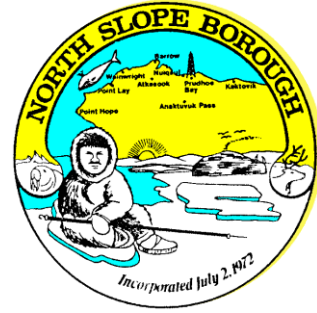


NORTH SLOPE BOROUGH

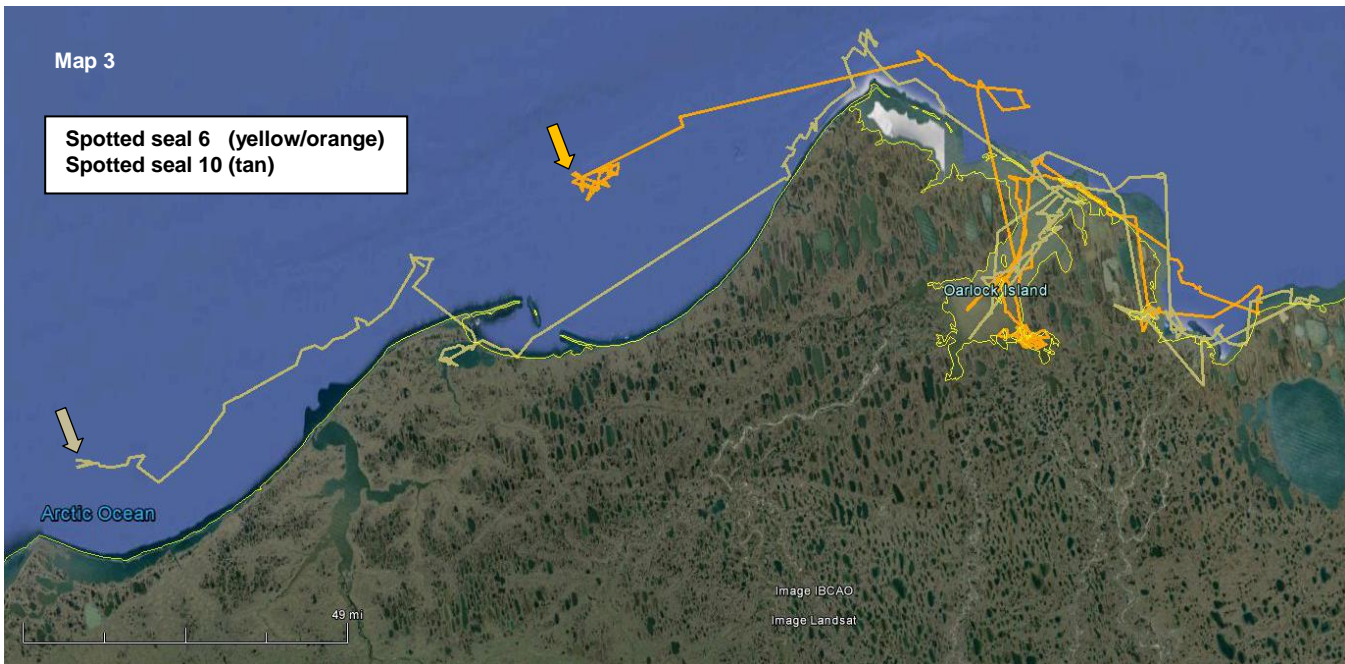
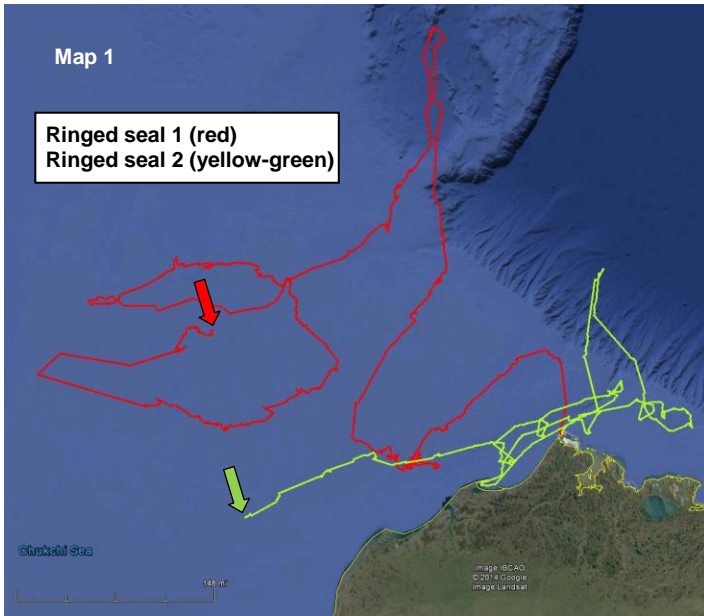
Department of Wildlife Management



Seal Baseline Study (NMFS Permit #15324)

Map 8

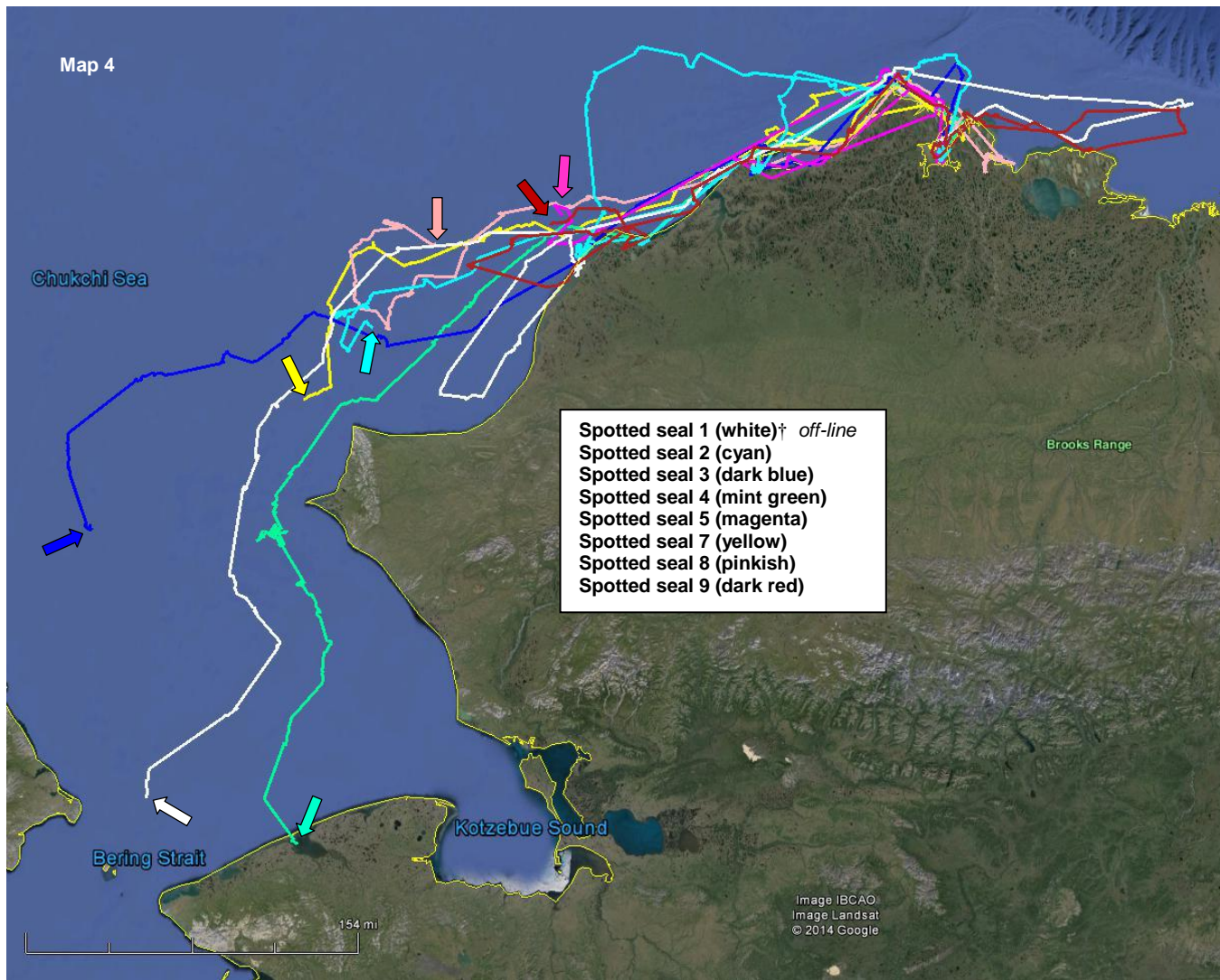
Locations as of September 12, 2014



Contact

Andy Von Duyke
Wildlife Biologist

andrew.vonduyke@north-slope.org
907-852-0350



Map 1:

Ringed seal 1 (adult ♂) was tagged on 21-July, 2014, and ringed seal 2 (sub-adult ♂) was tagged on 22-July, 2014. Both ringed seals travelled far offshore to the ice edge but now are quite far from the ice.

Map 2:

Ringed seal 3 (juvenile ♀) was tagged on 30-August, 2014. The large northwestern deflection out of Elson Lagoon into the Chukchi Sea is due to a low quality satellite location. *This seal's last known location was transmitted on 3-September 2014.

Map 3:

Spotted seal 6 (adult ♂) was tagged on 19-August, 2014. Spotted seal 10 (adult ♂) was tagged on 22-August, 2014. Similar to the seals in map 4, these seals now appear to be in "travel mode" and are following the coast to the southwest.

Map 4:

Spotted seal 1 (sub-adult ♂) was tagged on 29-July, 2014. Spotted seal 2 (sub-adult ♂) was tagged on 31-July, 2014. Spotted seals 3 (sub-adult ♂), 4 (sub-adult ♂), and 5 (juvenile ♂) were all tagged on 18-August, 2014. Spotted seals 7 (sub-adult ♀), 8 (sub-adult ♂), and 9 (sub-adult ♀) were all tagged on 19-August, 2014. Note the continuation of their travels SW along the coast. It is also interesting to see their use of the lagoon systems and estuaries.

†The last known location of spotted seal 1 was transmitted on 1-September, 2014.