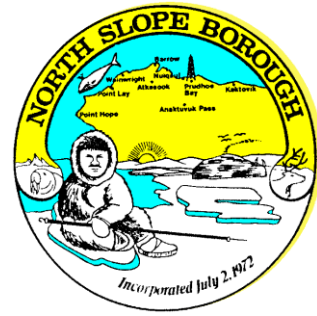


NORTH SLOPE BOROUGH

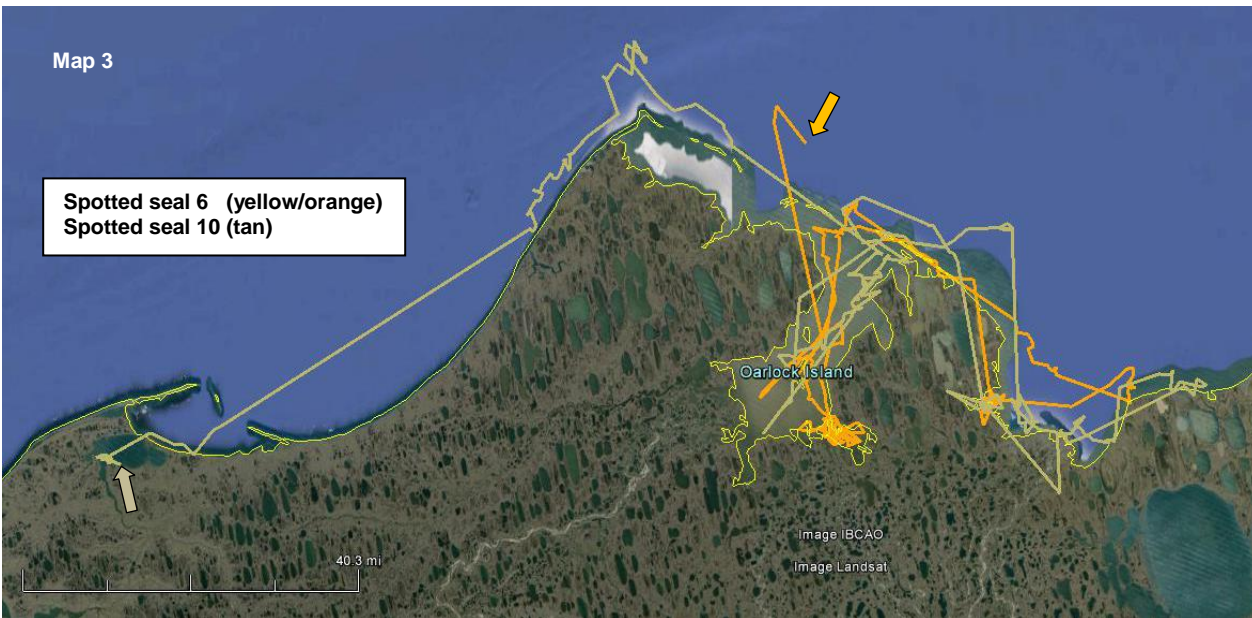
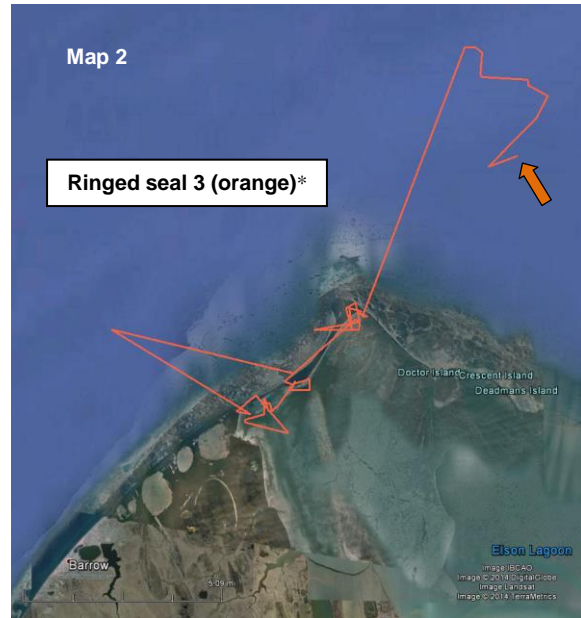
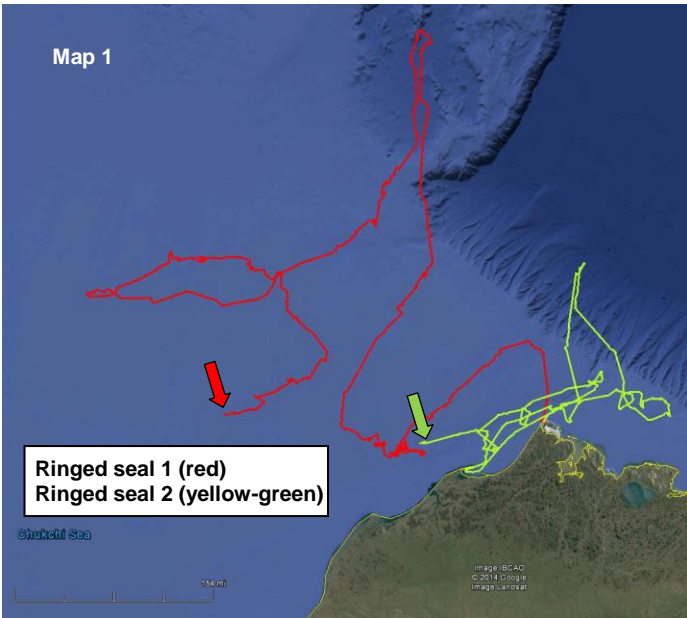
Department of Wildlife Management



Seal Baseline Study (NMFS Permit #15324)

Map 7

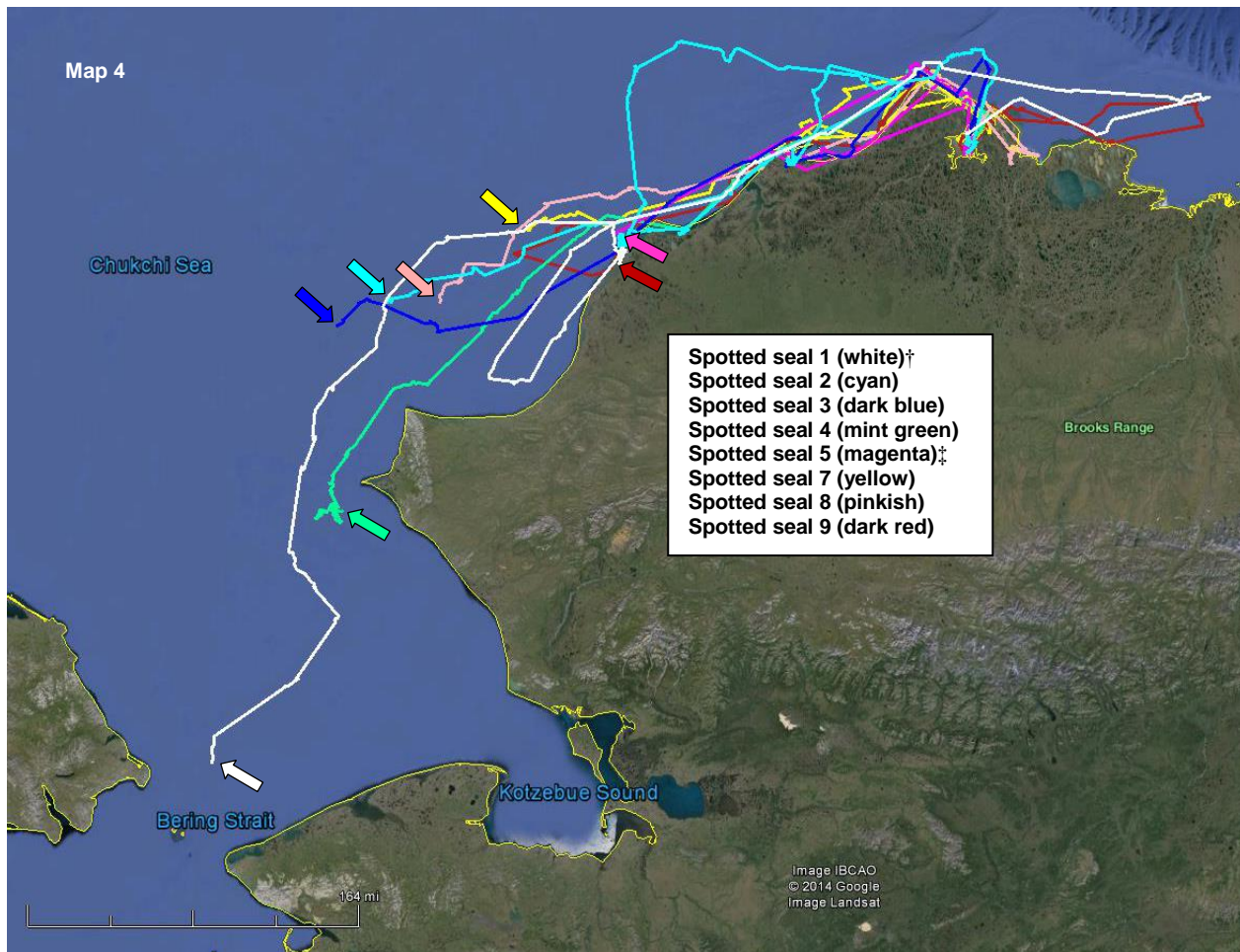
Locations as of September 7, 2014



Contact

Andy Von Duyke
Wildlife Biologist

andrew.vonduyke@north-slope.org
907-852-0350



Map 1:

Ringed seal 1 (adult ♂) was tagged on 21-July, 2014, and ringed seal 2 (sub-adult ♂) was tagged on 22-July, 2014. Both ringed seals travelled far offshore to the ice edge but now are quite far from the ice.

Map 2:

Ringed seal 3 (juvenile ♀) was tagged on 30-August, 2014. *This seal's last location was transmitted on 3-September 2014. The large northwestern deflection out of Elson Lagoon into the Chukchi Sea is due to a low quality satellite location.

Map 3:

Spotted seal 6 (adult ♂) was tagged on 19-August, 2014. Spotted seal 10 (adult ♂) was tagged on 22-August, 2014. Both seals have spent much of their time in the near shore waters and bays (Admiralty and Kugrua respectively). Spotted seal 6 moved from Pittalukruak Lake to his present location in one day. It will be interesting to see if he follows the other spotted seals that have begun to travel south along the coast.

Map 4:

†Spotted seal 1 (sub-adult ♂) was tagged on 29-July, 2014. The last known location of this seal as of 1-September, 2014 was near the Bering Straits. Spotted seal 2 (sub-adult ♂) was tagged on 31-July, 2014. Spotted seals 3 (sub-adult ♂), 4 (sub-adult ♂), and 5 (juvenile ♂) were tagged on 18-August, 2014. ‡The last known location of spotted seal 5 was received on 6-September, 2014 after a long period of no transmissions received. Spotted seals 7 (sub-adult ♀), 8 (sub-adult ♂), and 9 (sub-adult ♀) were all tagged on 19-August, 2014. All seals shown in this map have begun to travel southwest along the coastline.