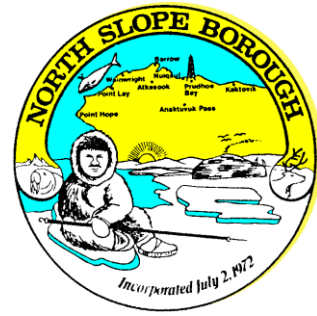


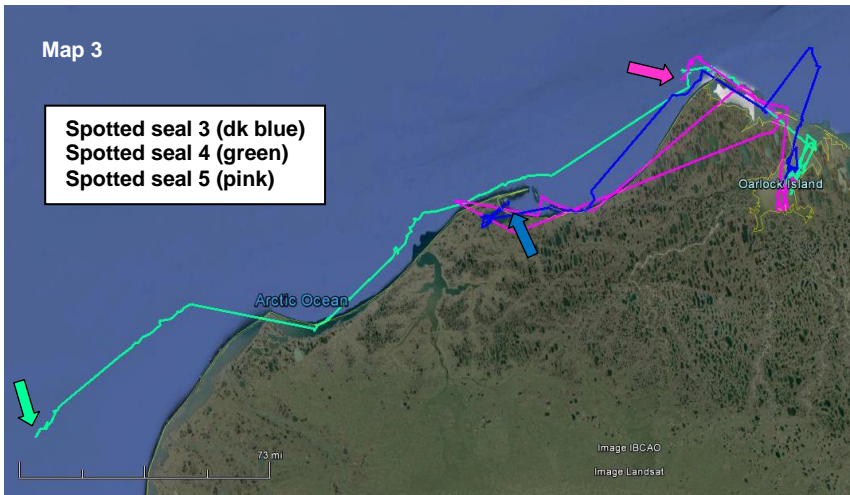
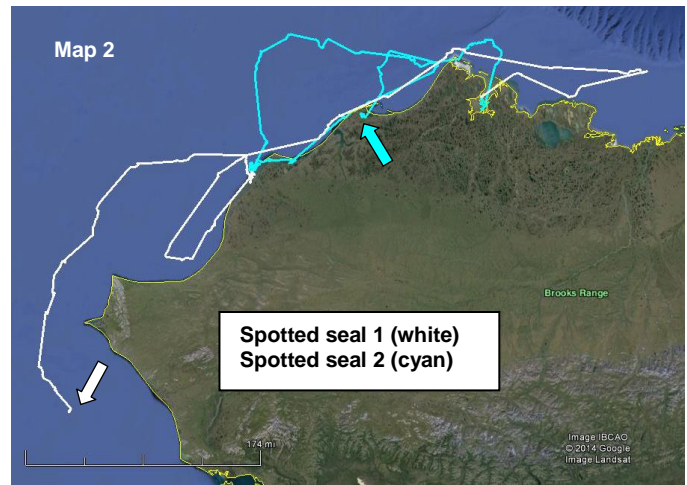
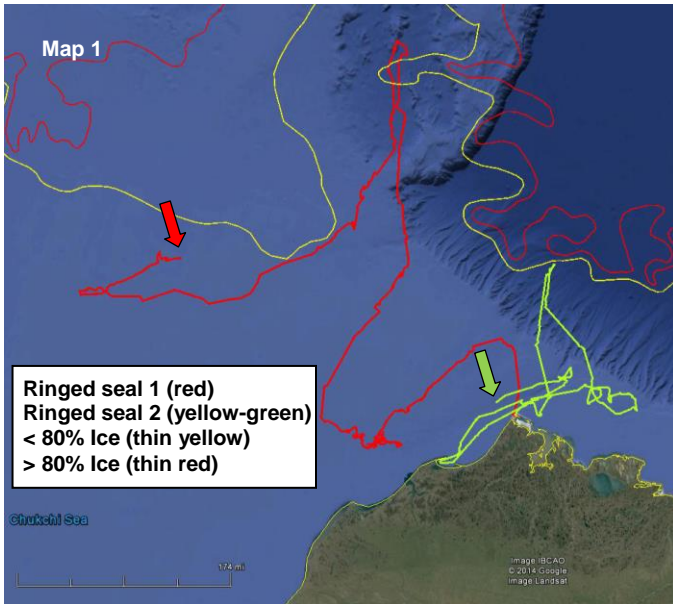
# NORTH SLOPE BOROUGH

## Department of Wildlife Management



### Seal Baseline Study - Map 6

Locations as of August 30, 2014



Map 1:

Both ringed seals are males and travelled far offshore to the ice edge. Ringed seal 1 (adult) is still offshore near the edge of the marginal ice zone (red arrow). Ringed seal 2 (sub-adult) remains near Barrow (yellow-green arrow).

Map 2:

Spotted seal 1 is about 80 miles south of Point Hope (white arrow). Spotted seal 2 is hanging out in Kugrua Bay (cyan arrow). Both are male sub-adults.

Map 3:

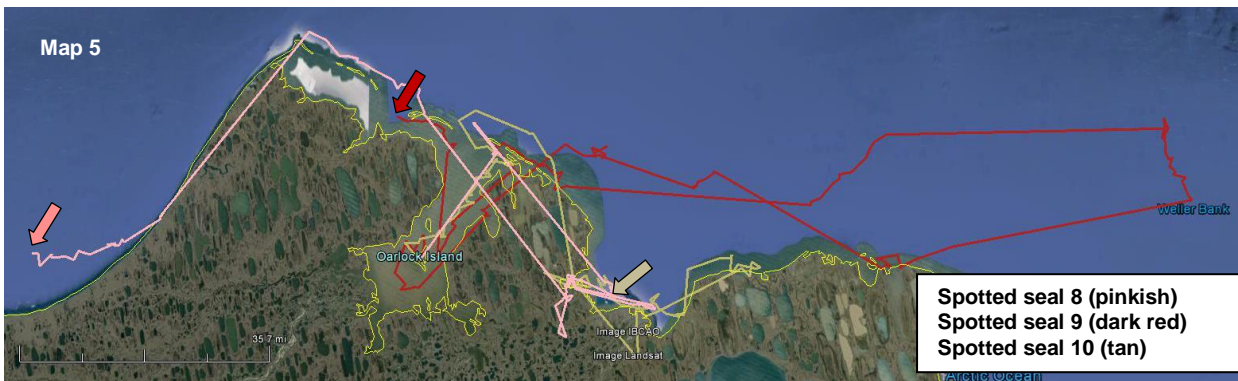
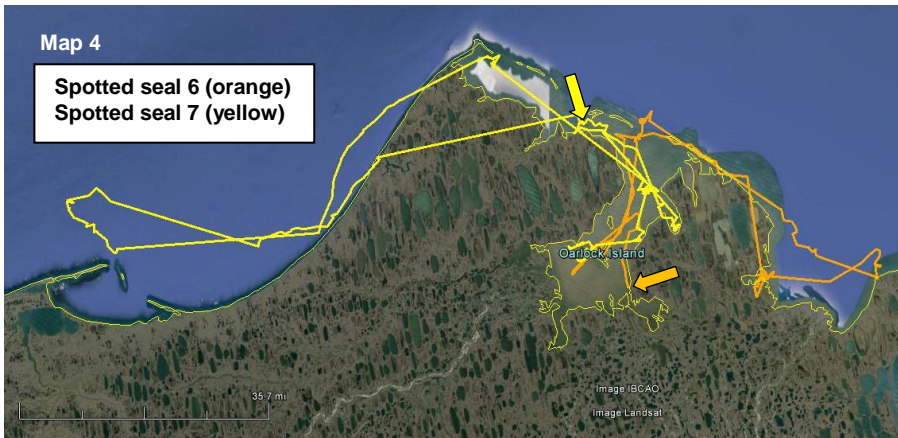
All spotted seals in this map are males and were caught on 8-18-14. Spotted seal 3 is in Peard Bay (dark blue arrow). Spotted seal 4 is heading to the southwest along the coast and is about 40 miles southwest of Point Lay (green arrow). Spotted seal 5 is just offshore from Barrow in the Chukchi Sea (pink arrow).

NMFS Permit #15324

Contact

Andy Von Duyke  
 Wildlife Biologist

[andrew.vonduyke@north-slope.org](mailto:andrew.vonduyke@north-slope.org)  
 907-852-0350



**Map 4:**

Both spotted seals on this map were caught on 8-19-14. Spotted seal 6 is a large mature male. He has returned to Admiralty Bay to the east of Oarlock Island (orange arrow). Spotted seal 7 is a sub-adult female. She is now in Elson Lagoon to the southwest of Cooper Island (yellow arrow).

**Map 5:**

Spotted seals 8 and 9 were caught on 8-19-14. Spotted seal 8 is a larger male and has been heading southwest along the coast; almost to Peard Bay (pinkish arrow). Spotted seal 9 is a juvenile female. She made a long journey to the east, headed north at Weller Bank, and has returned to the same region as spotted seal 7 in map 4 above (i.e. SW of Cooper Island, dark red arrow). Spotted seal 10 has spent a large amount of time in Smith Bay (tan arrow). It also appears that this seal swam up river about 10 miles prior to returning to Smith Bay.



**Map 6:**

Today we tagged a young of the year ringed seal (female). She was released in Elson Lagoon at Niksiuraq (green arrow). Next week's map will show travel routes for this seal.