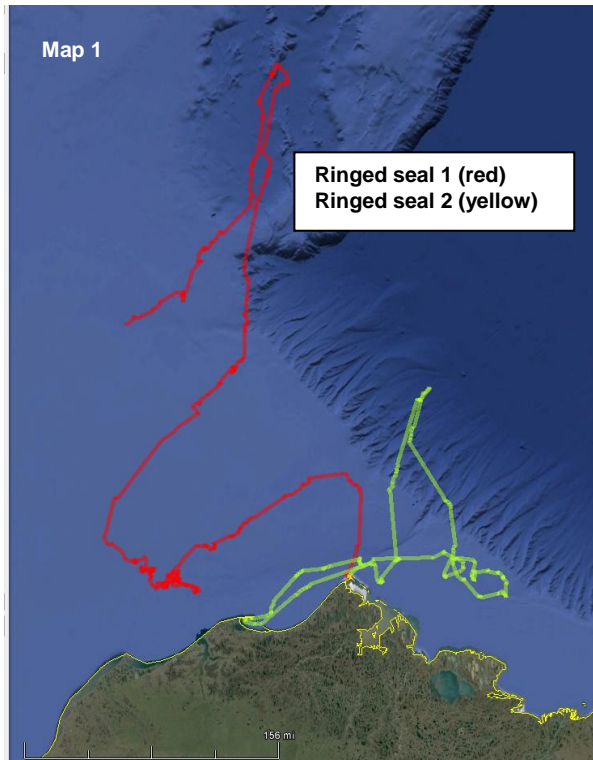
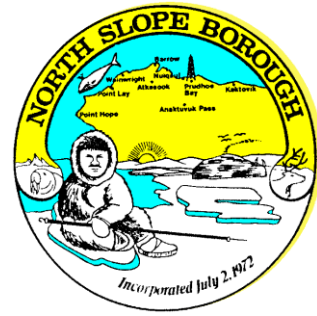


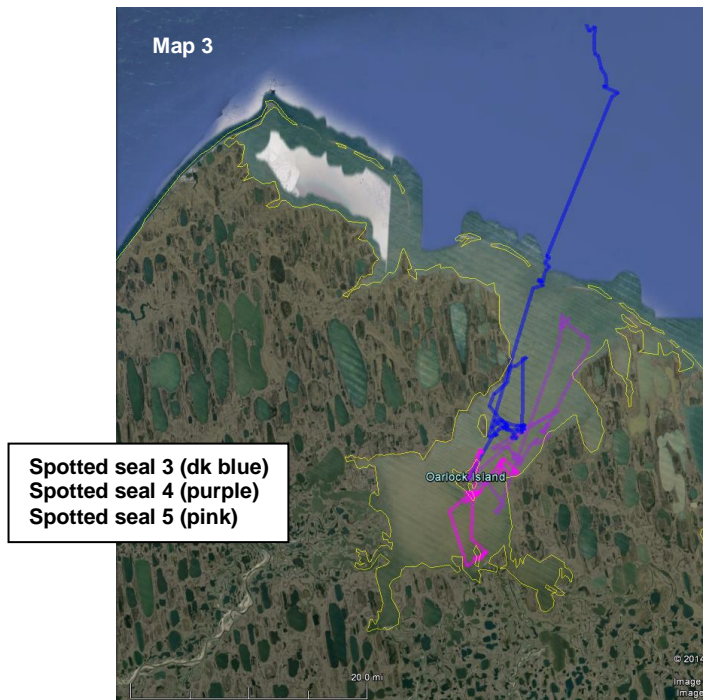
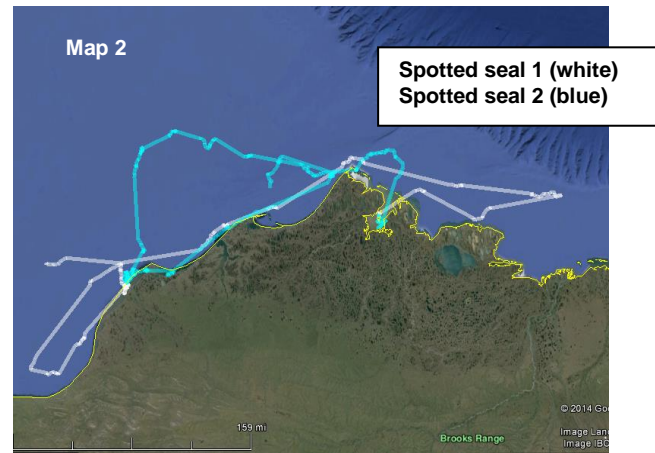
NORTH SLOPE BOROUGH

Department of Wildlife Management



Seal Baseline Study - Map 5

Locations as of August 23, 2014



Map 1:

Both ringed seals are males and travelled far offshore to the ice edge. Ringed seal 1 (adult) is still offshore, while ringed seal 2 (sub-adult) is now near Barrow.

Map 2:

Spotted seals 1 and 2 (male sub-adults) both hauled out near point lay for a while before ranging farther out to sea to the southwest.

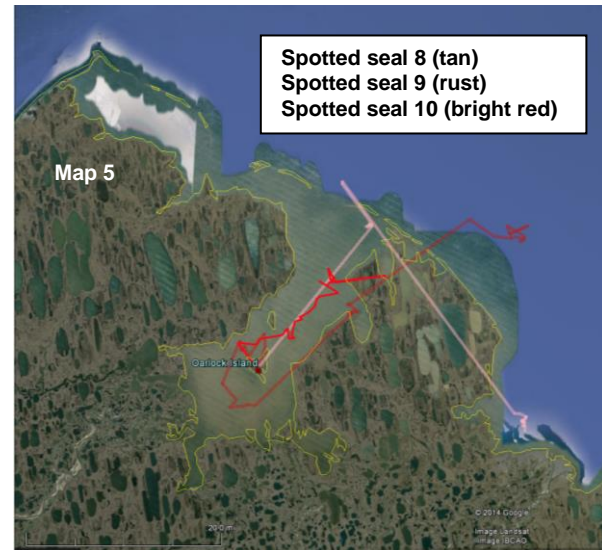
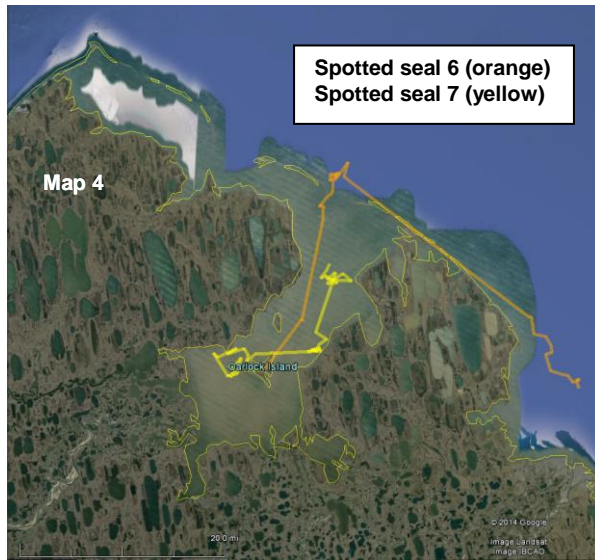
Map 3:

All spotted seals in this map are males and were caught on 8-18-14. Though spotted seal 3 has begun to travel out to sea, all seals lingered in Admiralty Bay for several days after they were tagged.

Contact

Andy Von Duyke
Wildlife Biologist

andrew.vonduyke@north-slope.org
907-852-0350



Map 4:

Both spotted seals on this map were caught on 8-19-14. Spotted seal 6 is a large mature male. Spotted seal 7 is a sub-adult female. These seals, like those in map 3, stuck around Admiralty Bay for a few days after they were tagged.

Map 5:

Spotted seals 8 and 9 were caught on 8-19-14. Spotted seal 8 was a larger male while spotted seal 9 was a juvenile female. Note the similar pattern of travel for the two males in map 4 and map 5. Spotted seal 10 is another large mature male and was captured on 8-22-14. Note that spotted seal 10 has not really lingered in Admiralty Bay. It will be interesting to see if his track is similar to spotted seals 6 and 8.