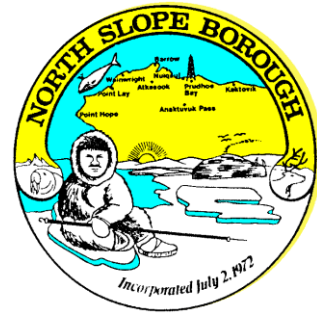


# NORTH SLOPE BOROUGH

## Department of Wildlife Management

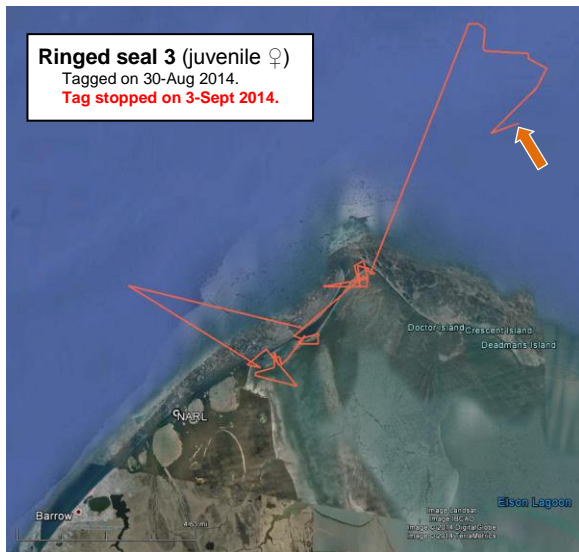
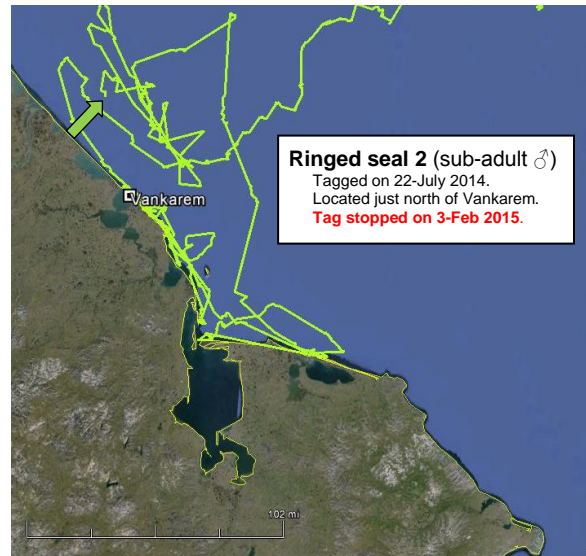
Seal Baseline Study (NMFS Permit #15324)  
**Map 27 – Locations as of March 26, 2015**



Map scale has been increased to show details.

A complete archive of all maps to date can be found at:

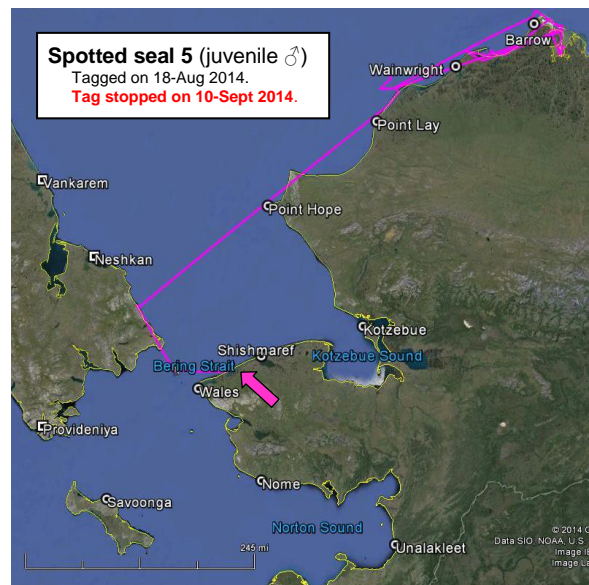
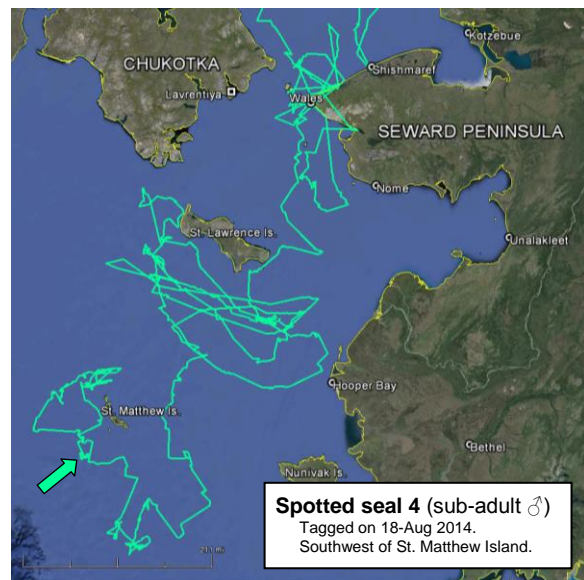
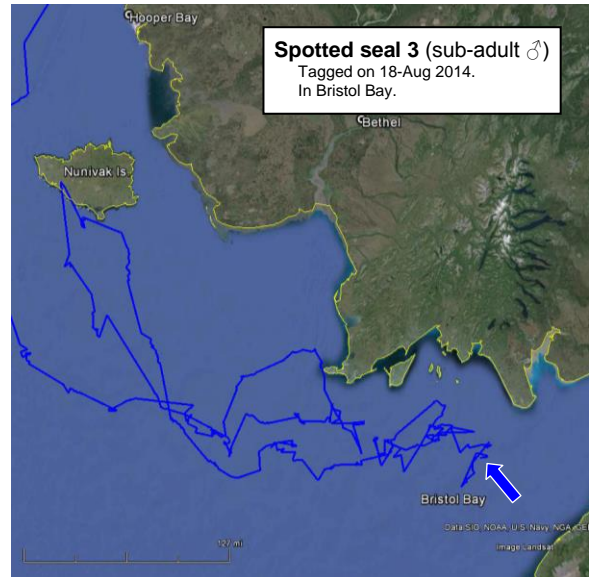
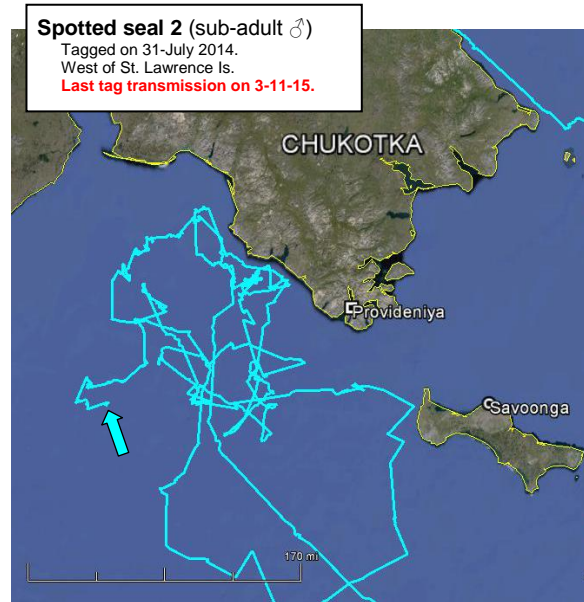
[www.north-slope.org/departments/wildlife-management/studies-and-research-projects/ice-seals/ringed-seal-research/ringed-seal-research-results-2014](http://www.north-slope.org/departments/wildlife-management/studies-and-research-projects/ice-seals/ringed-seal-research/ringed-seal-research-results-2014)



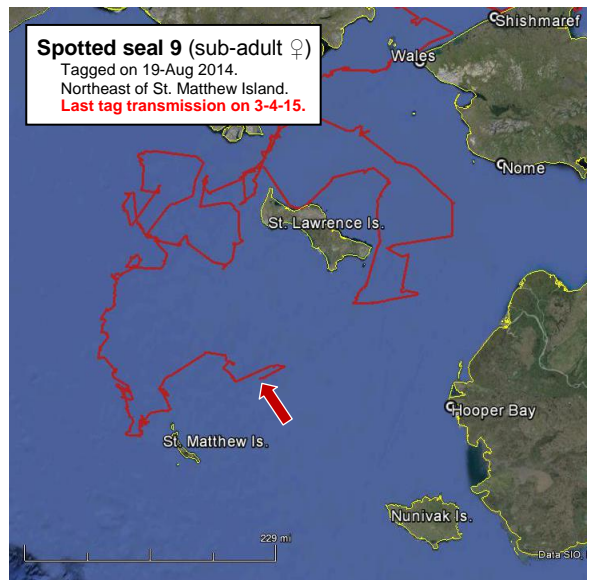
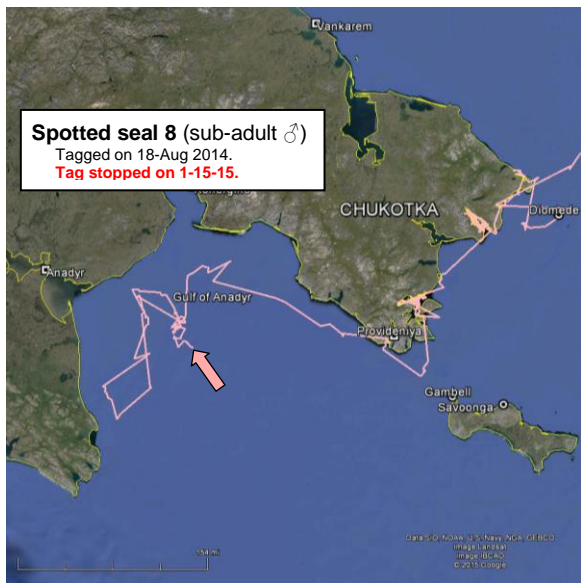
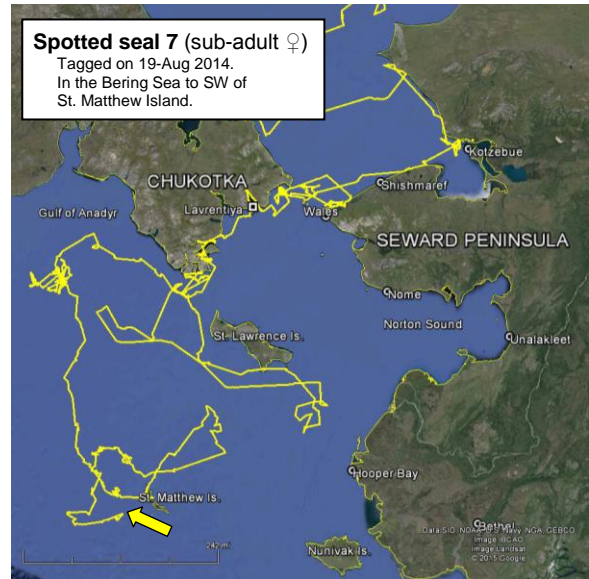
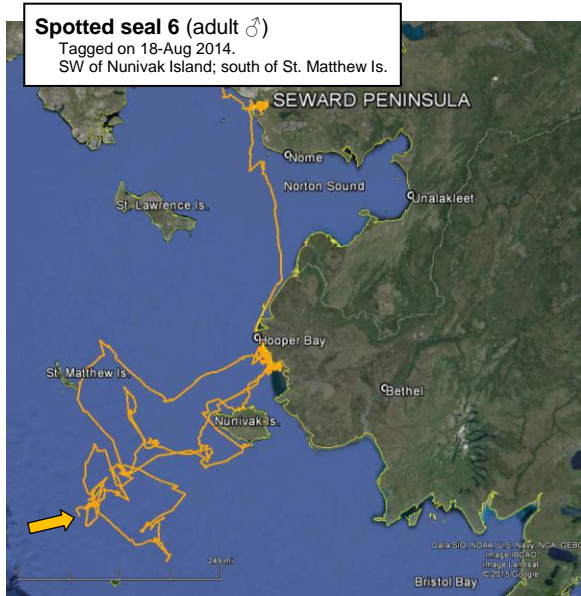
Contact

Andy Von Duyke  
 Wildlife Biologist

[andrew.vonduyke@north-slope.org](mailto:andrew.vonduyke@north-slope.org)  
 907-852-0350



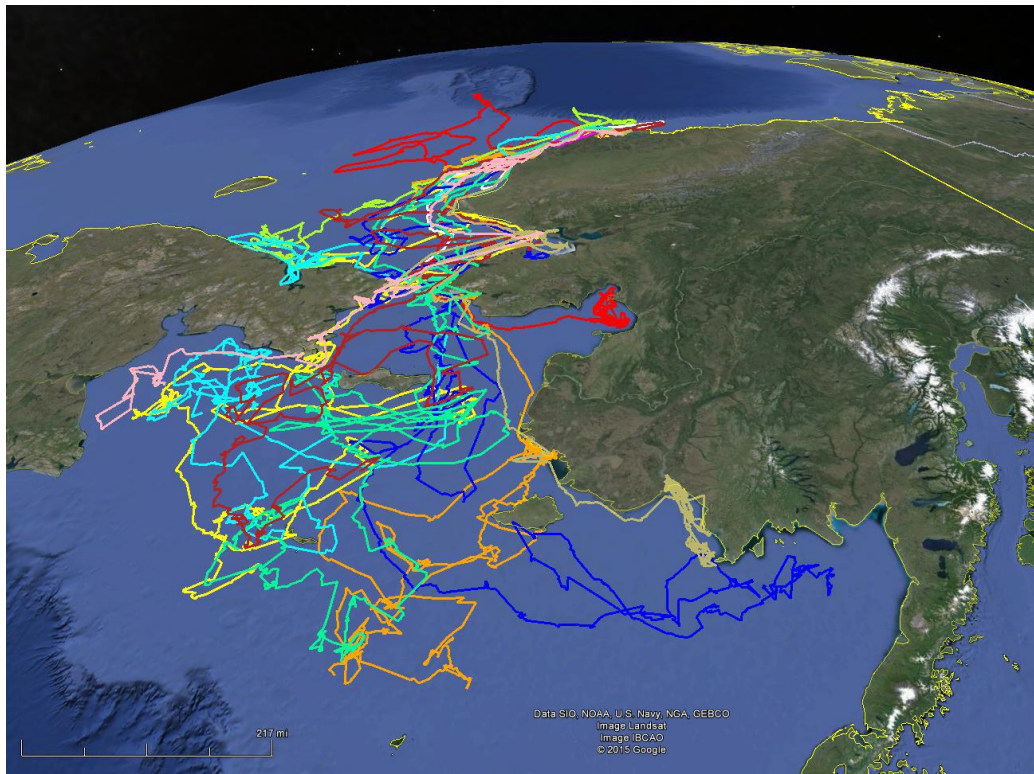
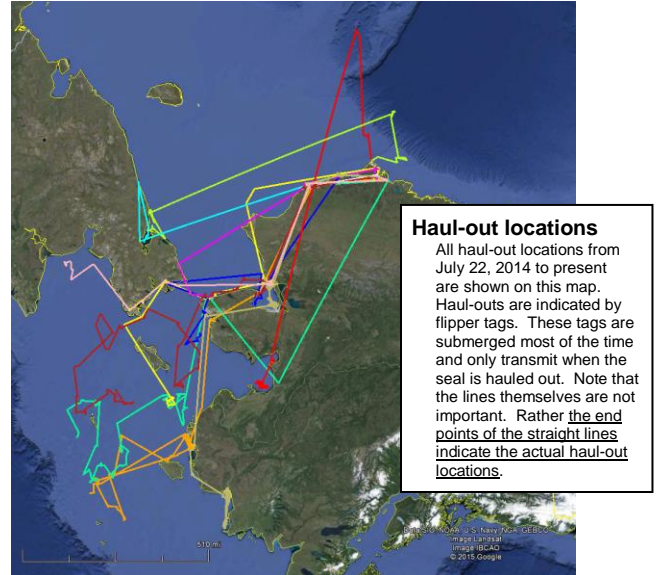
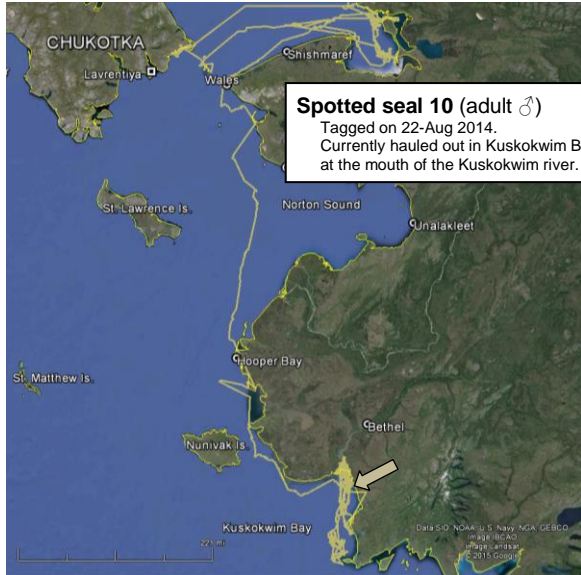




Contact

Andy Von Duyke  
Wildlife Biologist

[andrew.vonduyke@north-slope.org](mailto:andrew.vonduyke@north-slope.org)  
907-852-0350



All seal movements from July/August 2014 to present.

Contact

Andy Von Duyke  
Wildlife Biologist

[andrew.vonduyke@north-slope.org](mailto:andrew.vonduyke@north-slope.org)  
907-852-0350