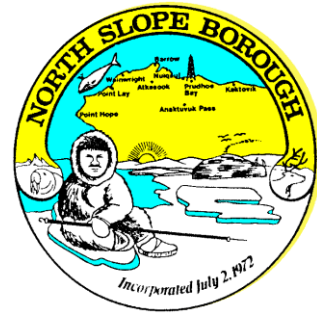


NORTH SLOPE BOROUGH

Department of Wildlife Management

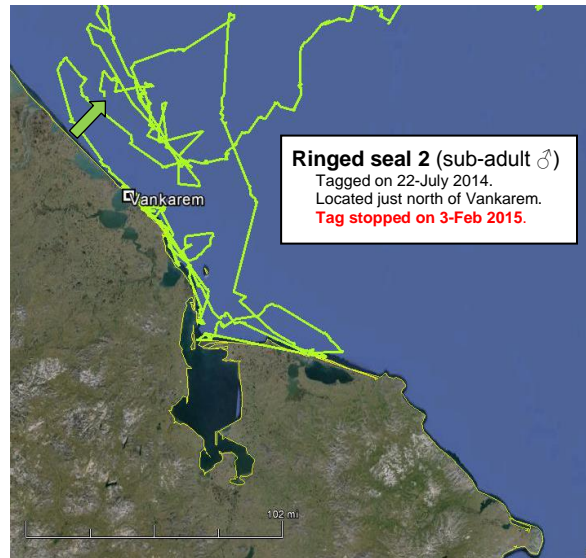
Seal Baseline Study (NMFS Permit #15324)
Map 25 – Locations as of February 27, 2015



Map scale has been increased to show details.

A complete archive of all maps to date can be found at:

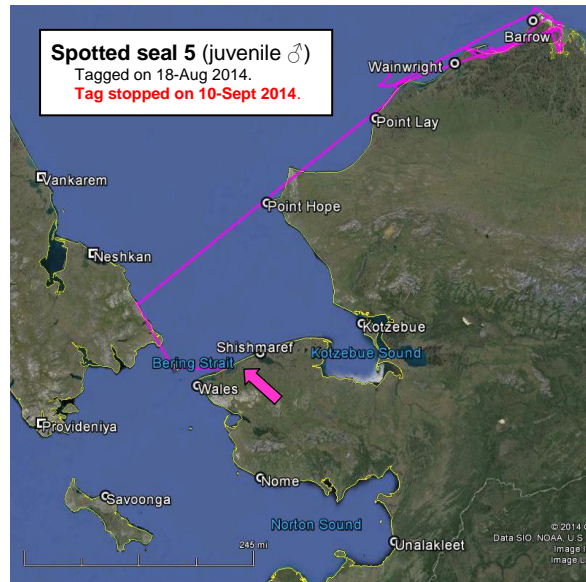
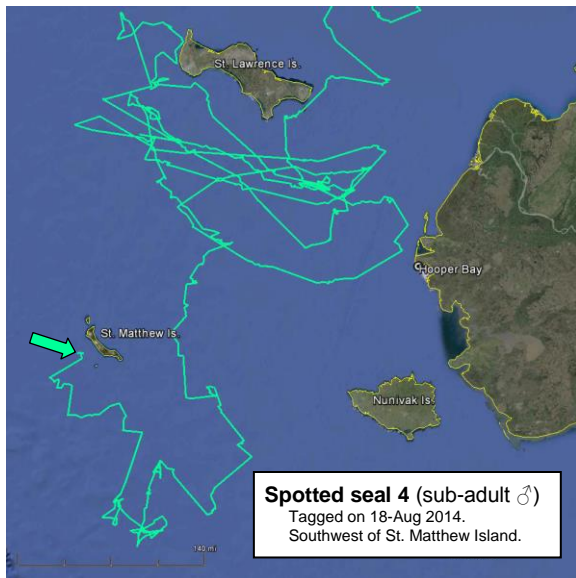
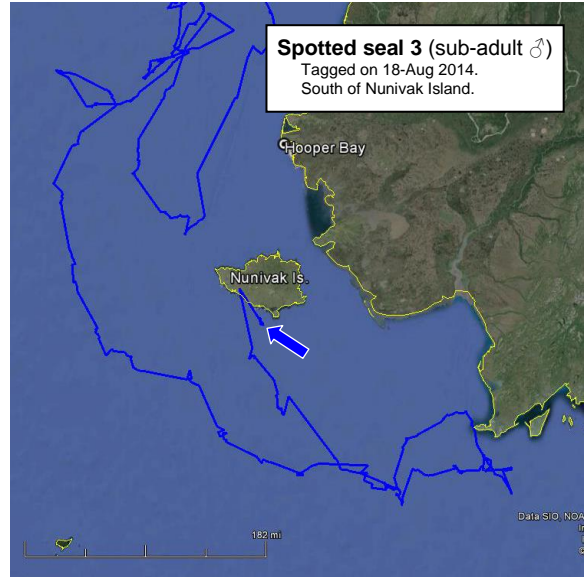
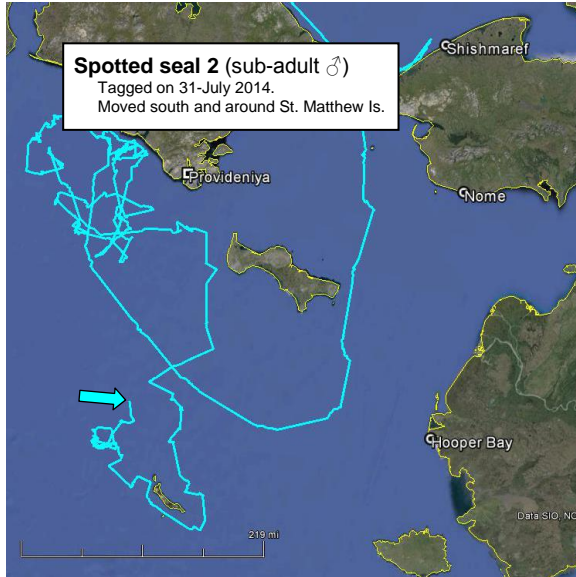
www.north-slope.org/departments/wildlife-management/studies-and-research-projects/ice-seals/ringed-seal-research/ringed-seal-research-results-2014



Contact

Andy Von Duyke
 Wildlife Biologist

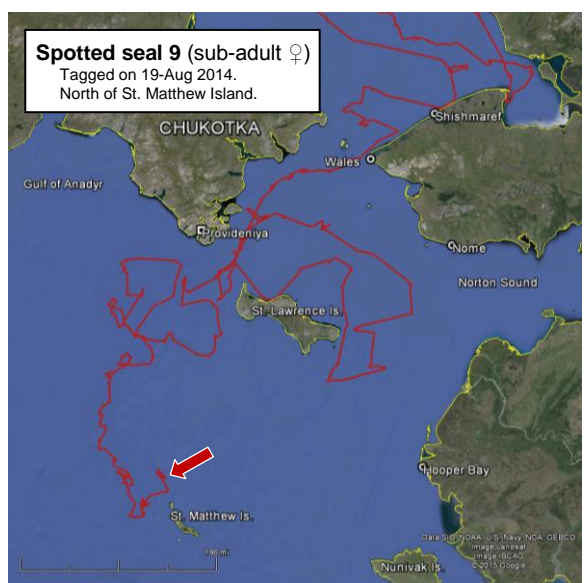
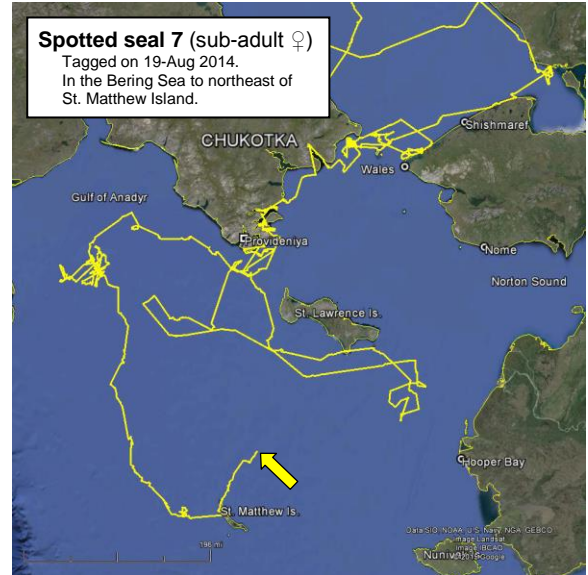
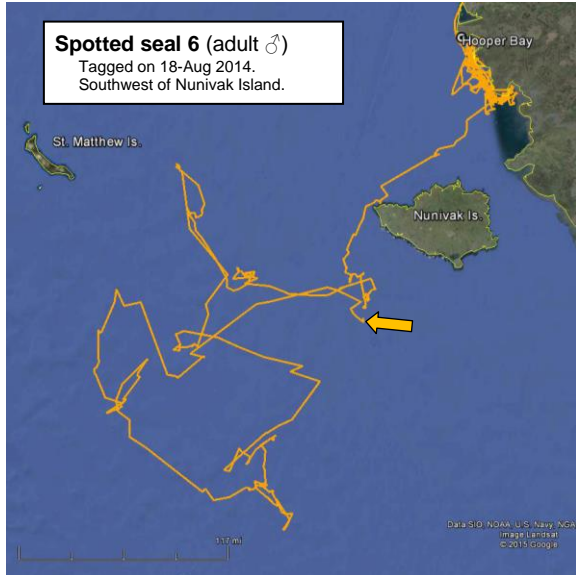
andrew.vonduyke@north-slope.org
 907-852-0350



Contact

Andy Von Duyke
Wildlife Biologist

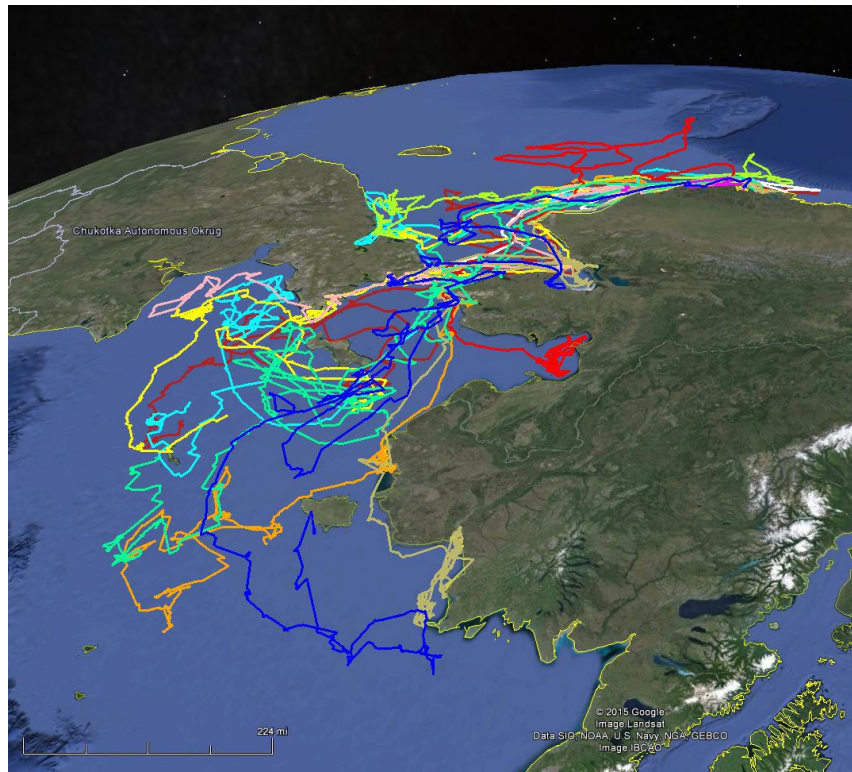
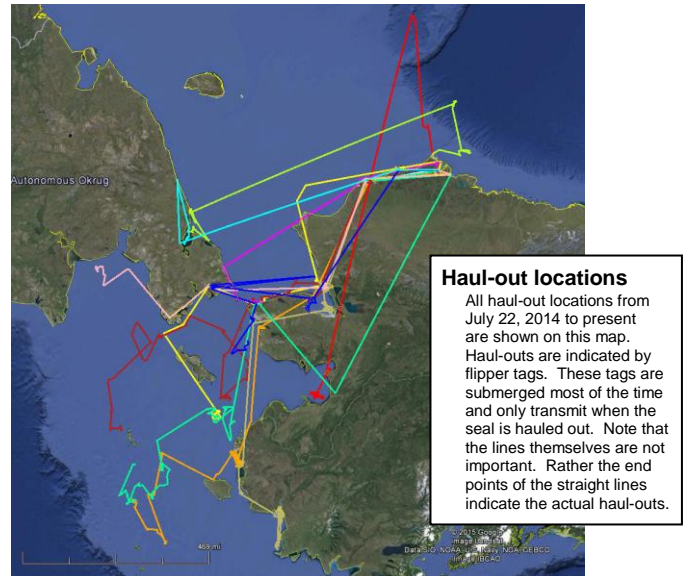
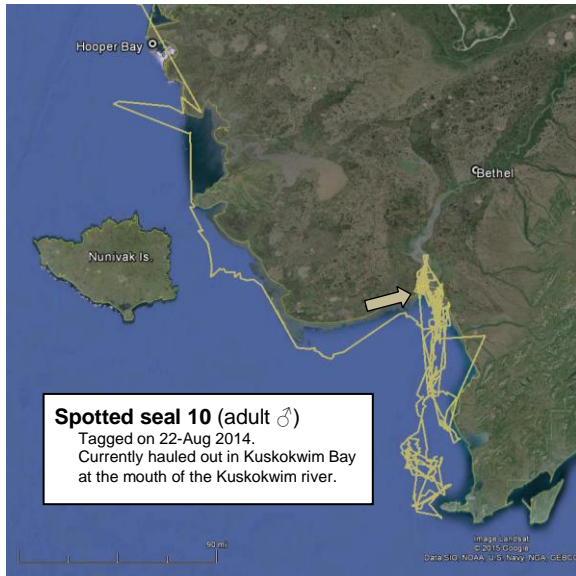
andrew.vonduyke@north-slope.org
907-852-0350



Contact

Andy Von Duyke
Wildlife Biologist

andrew.vonduyke@north-slope.org
907-852-0350



All seal movements from July/August 2014 to present.

Contact

Andy Von Duyke
Wildlife Biologist

andrew.vonduyke@north-slope.org
907-852-0350