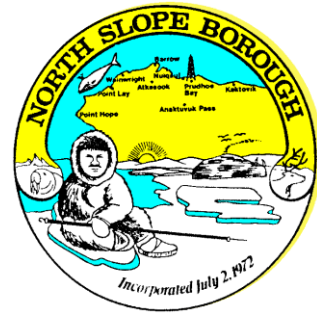


NORTH SLOPE BOROUGH

Department of Wildlife Management

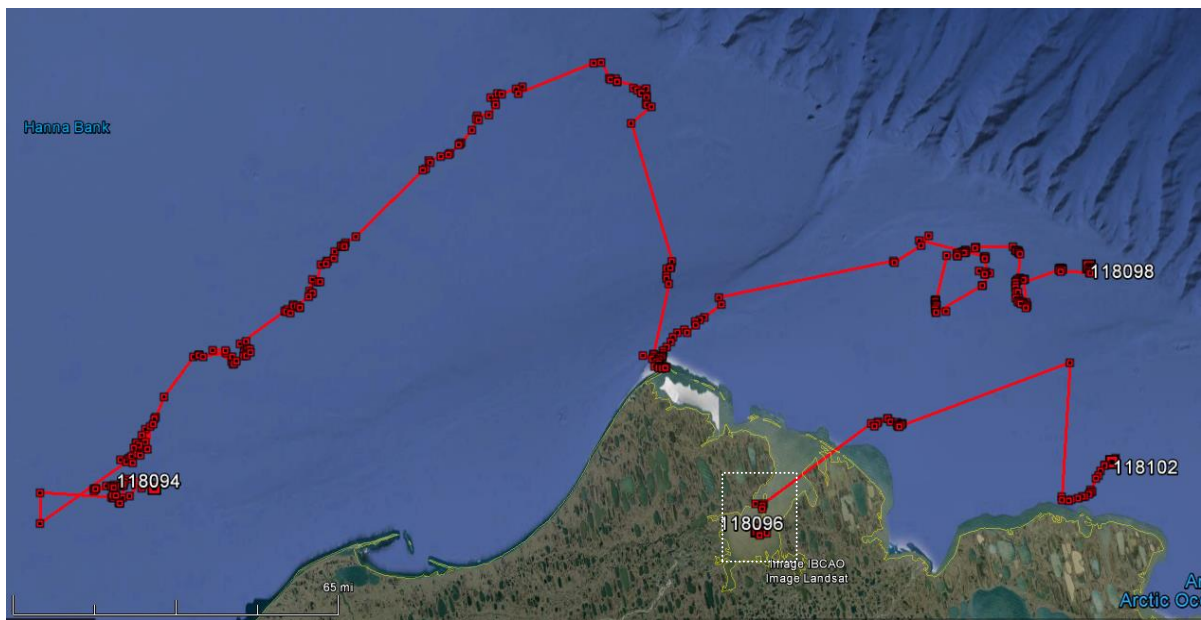
P.O. Box 69
Barrow, Alaska 99723

Phone: Central Office (907) 852-2611 ext. 350
or: (907) 852-0350
FAX: (907) 852 0351
Arctic Research Facility: (907) 852-0352



Ringed Seal Baseline Study - Map 2

July 26th - Aug 1st, 2014



- 118094 – ringed seal, male, adult
- 118098 – ringed seal, male, juvenile
- 118102 – spotted seal, male, juvenile*
- 118096 – spotted seal, male, subadult* (see inset)

*caught and tagged this week

Contact

Andy Von Duyke
andrew.vonduyke@north-slope.org

