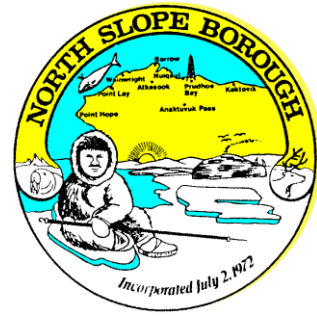


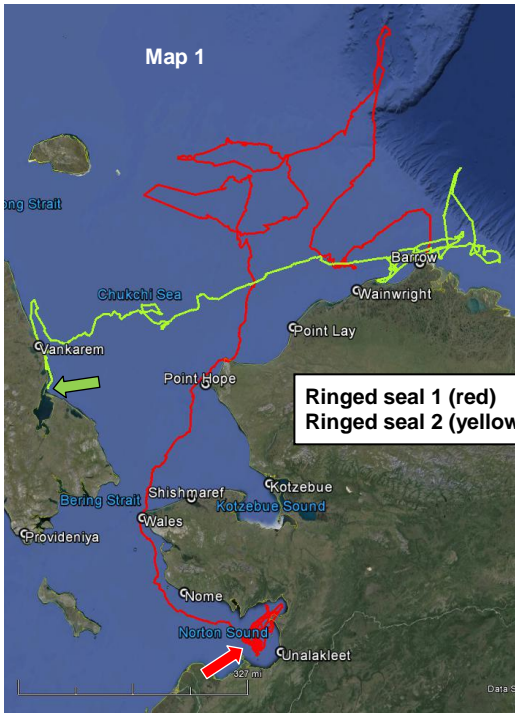
# NORTH SLOPE BOROUGH

## Department of Wildlife Management



### Seal Baseline Study (NMFS Permit #15324)

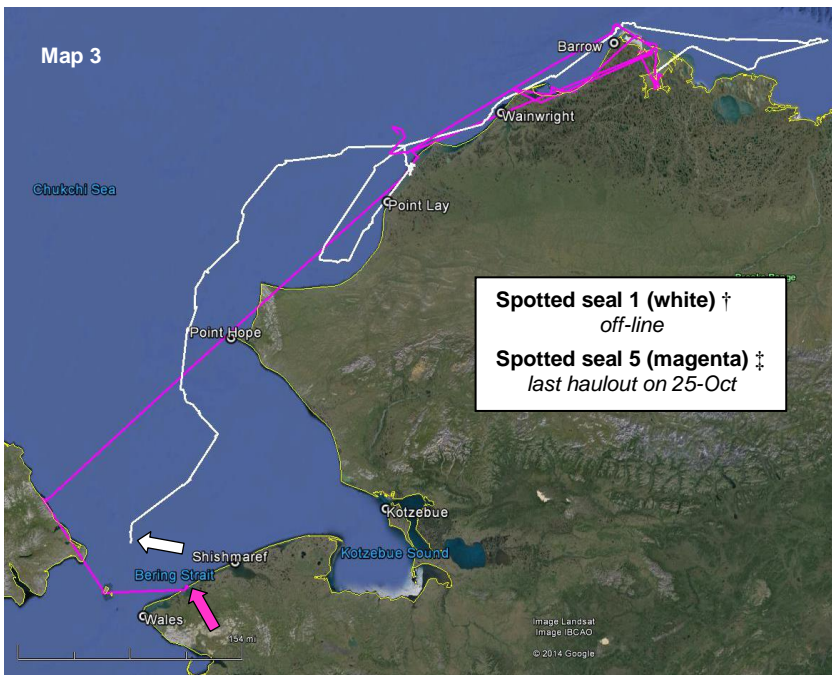
#### Map 16 Locations as of November 15, 2014



**Ringed seal 1 (red)**  
**Ringed seal 2 (yellow-green)**



**Ringed seal 3 (orange)\***  
*off-line*



**Spotted seal 1 (white) †**  
*off-line*  
**Spotted seal 5 (magenta) ‡**  
*last haulout on 25-Oct*

#### Map 1:

##### **Ringed seal 1 (adult ♂)**

Tagged on 21-July, 2014.  
Last haulout detected on 6-November in Norton Sound near Unalakleet. No significant movements.

##### **Ringed seal 2 (sub-adult ♂)**

Tagged on 22-July, 2014.  
Last haulout detected on 14-November on coast of Chukotka south of Vankarem. No significant movements.

#### Map 2:

##### **Ringed seal 3 (juvenile ♀)**

Tagged on 30-Aug, 2014 \*ended 3-Sept, 2014

#### Map 3:

##### **Spotted seal 1 (sub-adult ♂)**

Tagged on 29-July, 2014 †ended 1-Sept, 2014  
No haul outs indicated by flipper tag

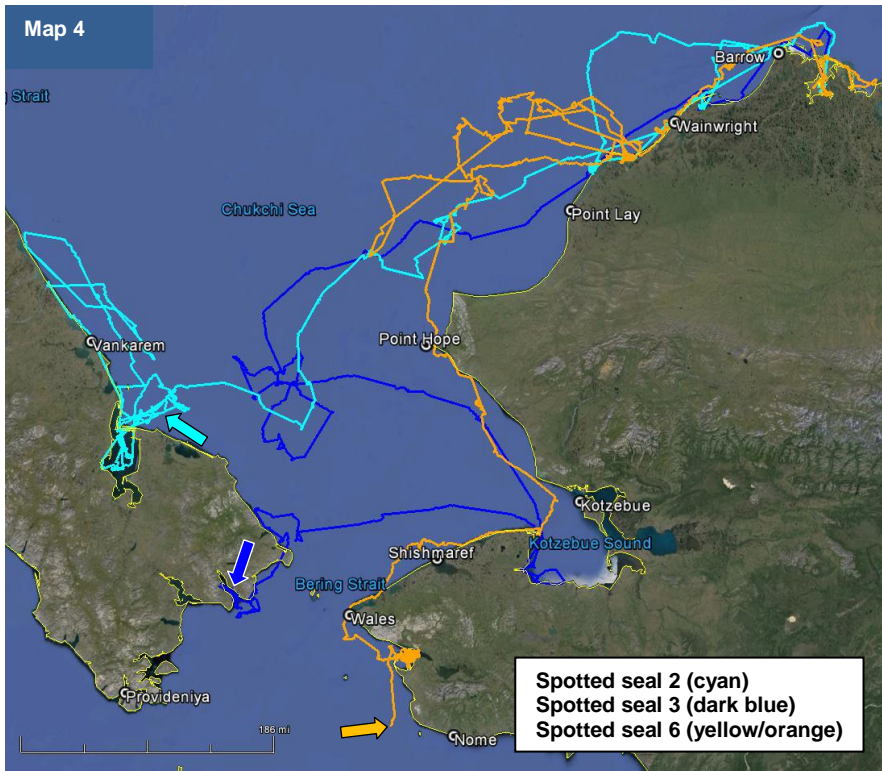
##### **Spotted seal 5 (juvenile ♂)**

Tagged on 18-Aug, 2014 ‡ended 10-Sept, 2014  
Flipper tag shows last known haulout on 25-October

Contact

Andy Von Duyke  
Wildlife Biologist

[andrew.vonduyke@north-slope.org](mailto:andrew.vonduyke@north-slope.org)  
907-852-0350

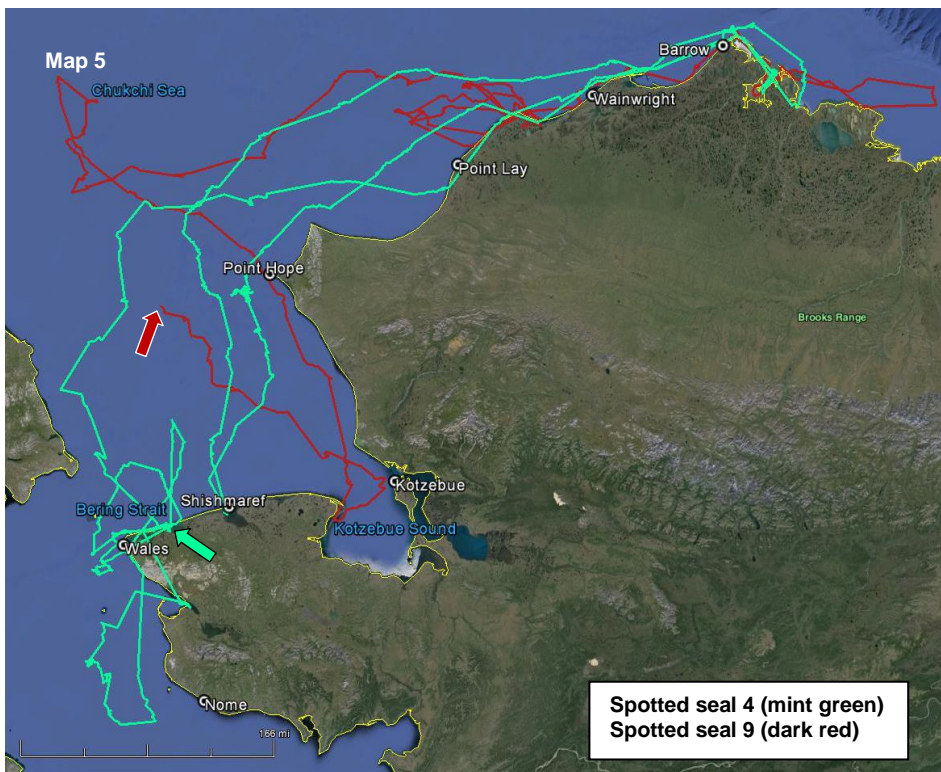


Map 4:

**Spotted seal 2** (sub-adult ♂)  
 Tagged on 31-July, 2014  
 Last haulout detected on 5-November  
 No significant movements

**Spotted seal 3** (sub-adult ♂)  
 Tagged on 18-Aug, 2014  
 Last haulout detected on 19-October  
 No significant movements

**Spotted seal 6** (adult ♂)  
 Tagged on 18-Aug, 2014  
 Last haulout detected on 13-November  
 Heading south



Map 5:

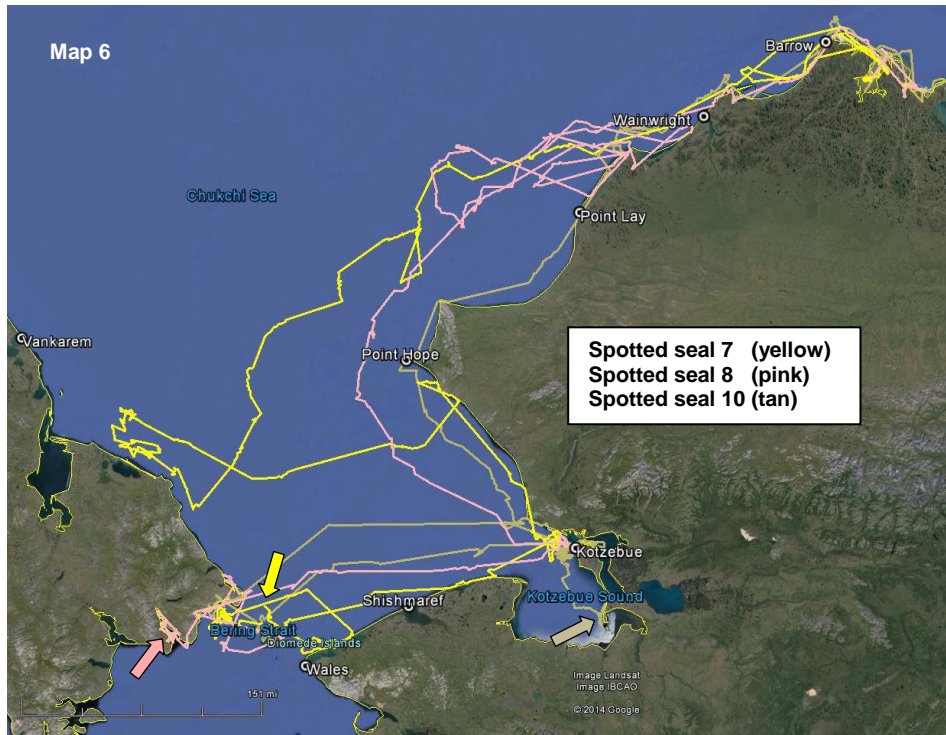
**Spotted seal 4** (sub-adult ♂)  
 Tagged on 18-Aug, 2014.  
 Last haulout detected on 15-November along  
 the shoreline NE of Wales.

**Spotted seal 9** (sub-adult ♀)  
 Tagged on 19-Aug, 2014  
 Last haulout detected on 6-November in  
 Kotzebue Sound.

Contact

Andy Von Duyke  
 Wildlife Biologist

[andrew.vonduyke@north-slope.org](mailto:andrew.vonduyke@north-slope.org)  
 907-852-0350



Map 6:

**Spotted seal 7 (sub-adult ♀)**

Tagged on 19-Aug, 2014.  
Last haulout detected on 13-November along coastline NE of Wales.

**Spotted seal 8 (sub-adult ♂)**

Tagged on 18-Aug, 2014.  
Last haulout detected on 7-November\* in St. Lawrence Bay.  
\*Mistakenly reported as 8-Nov. last week.

**Spotted seal 10 (adult ♂)**

Tagged on 22-Aug, 2014.  
Last haulout detected on 14-November near current location.

Contact

Andy Von Duyke  
Wildlife Biologist

[andrew.vonduyke@north-slope.org](mailto:andrew.vonduyke@north-slope.org)  
907-852-0350