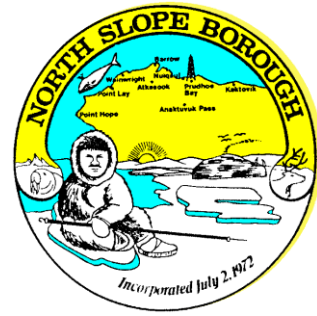


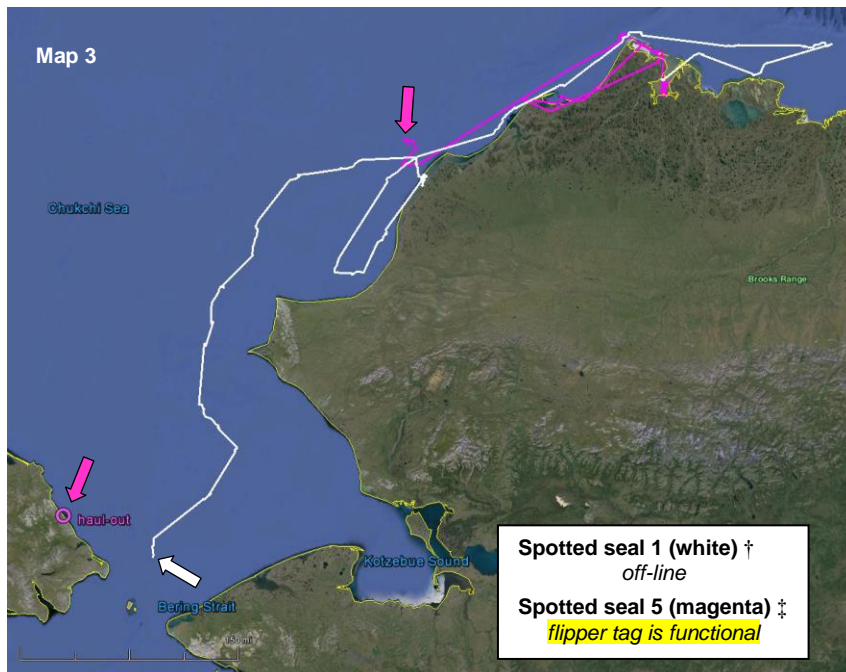
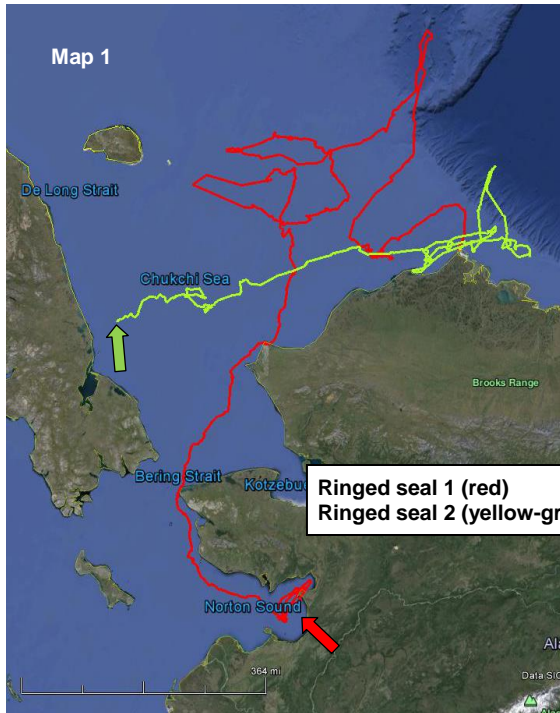
NORTH SLOPE BOROUGH

Department of Wildlife Management



Seal Baseline Study (NMFS Permit #15324)

Map 13 Locations as of October 18, 2014



Ringed seal 3 (orange)*
off-line

Ringed seal 1 (red)
Ringed seal 2 (yellow-green)

Spotted seal 1 (white) †
off-line
Spotted seal 5 (magenta) ‡
flipper tag is functional

Map 1:

Ringed seal 1 (adult ♂)

Tagged on 21-July, 2014
Distance travelled to date ≈ 6,100 km (3,790 mi)
Hauled out in Norton Sound this week

Ringed seal 2 (sub-adult ♂)

Tagged on 22-July, 2014
Distance travelled to date ≈ 3,100 km (1,920 mi)

Map 2:

Ringed seal 3 (juvenile ♀)

Tagged on 30-Aug, 2014
*ended 3-Sept, 2014

Map 3:

Spotted seal 1 (sub-adult ♂)

Tagged on 29-July, 2014
Total distance ≈ 1,950 km (1,211 mi)
†ended 1-Sept, 2014

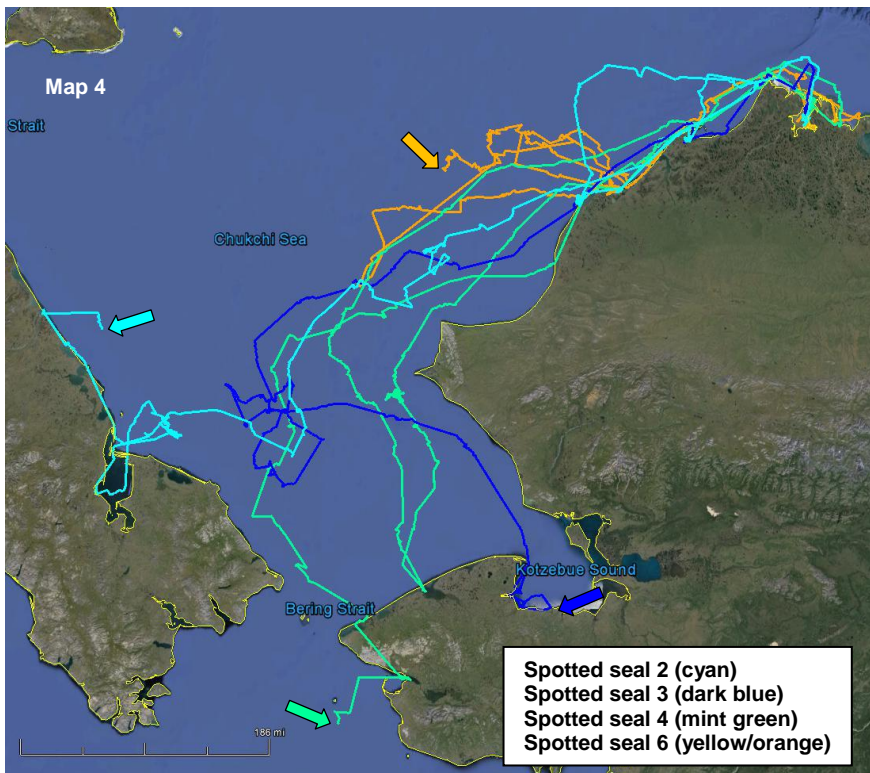
Spotted seal 5 (juvenile ♂)

Tagged on 18-Aug, 2014 ‡ended 10-Sept, 2014
Total distance ≈ 1,420 km (~880 mi) ← minimum
Flipper tag shows haulout location in Chukotka

Contact

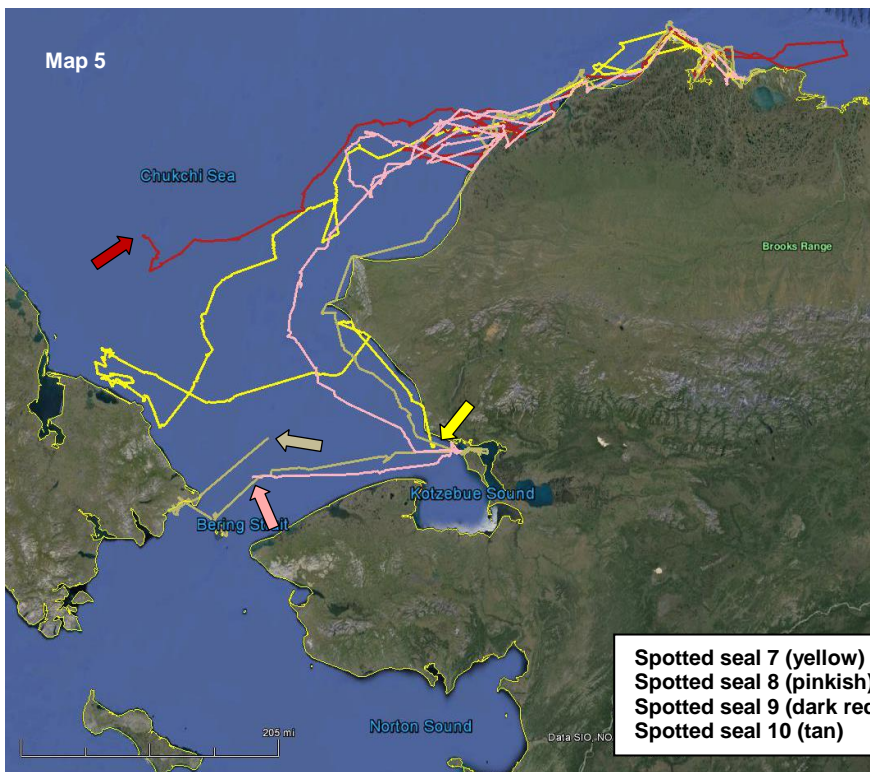
Andy Von Duyke
Wildlife Biologist

andrew.vonduyke@north-slope.org
907-852-0350



Map 4:

- Spotted seal 2** (sub-adult ♂)
 Tagged on 31-July, 2014
 Distance travelled to date ≈ 3,600 km (2,230 mi)
- Spotted seal 3** (sub-adult ♂)
 Tagged on 18-Aug, 2014
 Distance travelled to date ≈ 2,700 km (1,670 mi)
- Spotted seal 4** (sub-adult ♂)
 Tagged on 18-Aug, 2014
 Distance travelled to date ≈ 4,200 km (2,600 mi)
- Spotted seal 6** (adult ♂)
 Tagged on 18-Aug, 2014
 Distance travelled to date ≈ 3,200 km (1,980 mi)



Map 5:

- Spotted seal 7** (sub-adult ♀)
 Tagged on 19-Aug, 2014
 Distance travelled to date ≈ 2,900 km (1,800 mi)
- Spotted seal 8** (sub-adult ♂)
 Tagged on 18-Aug, 2014
 Distance travelled to date ≈ 2,900 km (1,800 mi)
- Spotted seal 9** (sub-adult ♀)
 Tagged on 19-Aug, 2014
 Distance travelled to date ≈ 2,700 km (1,670 mi)
- Spotted seal 10** (adult ♂)
 Tagged on 22-Aug, 2014
 Distance travelled to date ≈ 2,700 km (1,670 mi)

Contact

Andy Von Duyke
 Wildlife Biologist

andrew.vonduyke@north-slope.org
 907-852-0350