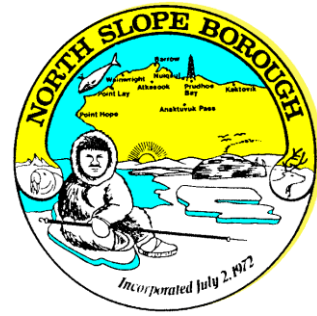


NORTH SLOPE BOROUGH

Department of Wildlife Management



Seal Baseline Study (NMFS Permit #15324)

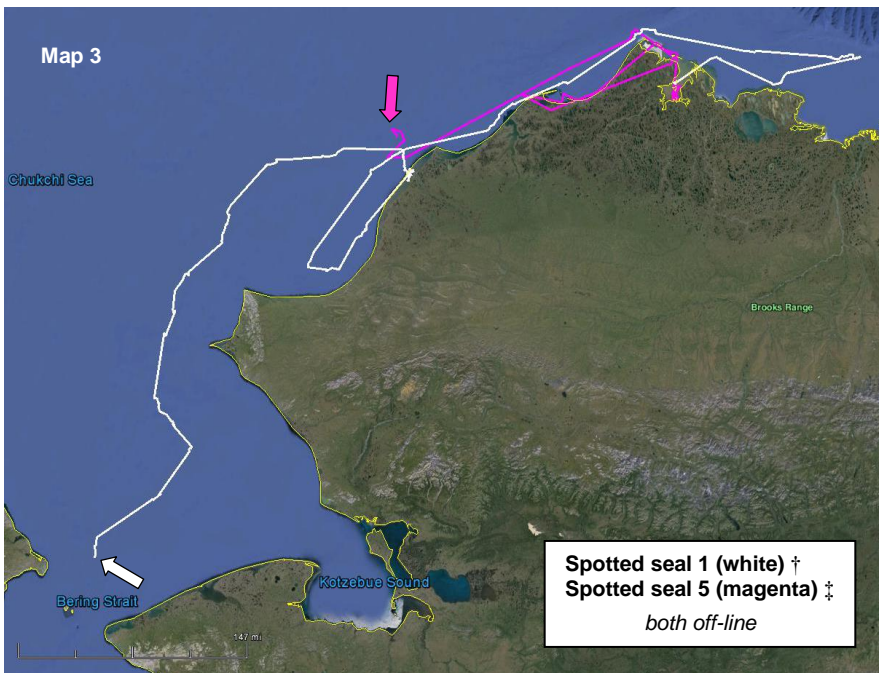
Map 12 Locations as of October 11, 2014



Ringed seal 1 (red)
Ringed seal 2 (yellow-green)



Ringed seal 3 (orange)*
off-line



Spotted seal 1 (white) †
Spotted seal 5 (magenta) ‡
both off-line

Map 1:

Ringed seal 1 (adult ♂)
Tagged on 21-July, 2014
Distance travelled to date ≈ 5,800 km (3,600 mi)

Ringed seal 2 (sub-adult ♂)
Tagged on 22-July, 2014
Distance travelled to date ≈ 2,900 km (1,800 mi)

Map 2:

Ringed seal 3 (juvenile ♀)
Tagged on 30-Aug, 2014
Large northwestern deflection out of Elson Lagoon into the Chukchi Sea is due to a low quality satellite location.
*ended 3-Sept, 2014

Map 3:

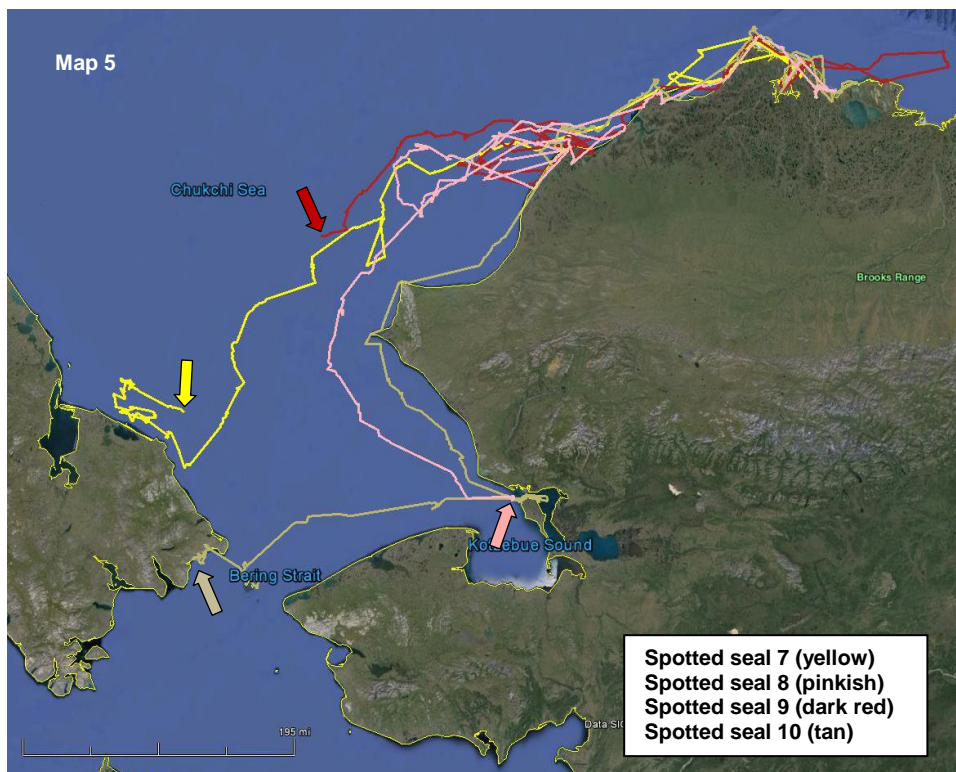
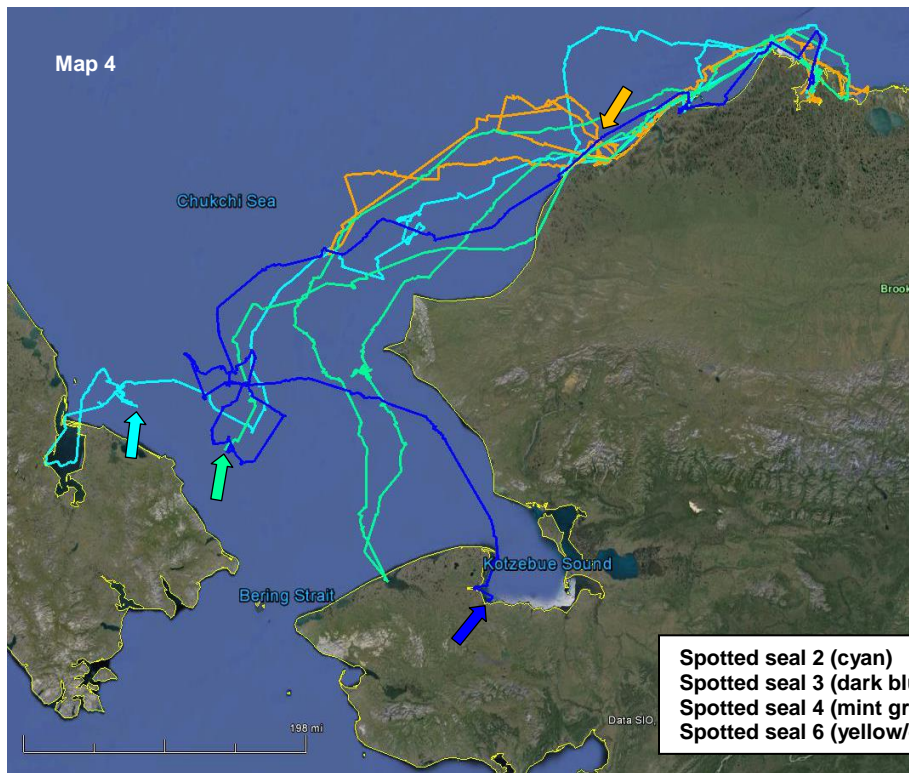
Spotted seal 1 (sub-adult ♂)
Tagged on 29-July, 2014
Total distance ≈ 1,950 km (1,211 mi)
†ended 1-Sept, 2014

Spotted seal 5 (juvenile ♂)
Tagged on 18-Aug, 2014
Total distance ≈ 880 km (550 mi)
‡ended 10-Sept, 2014

Contact

Andy Von Duyke
Wildlife Biologist

andrew.vonduyke@north-slope.org
907-852-0350



Contact

Andy Von Duyke
Wildlife Biologist

andrew.vonduyke@north-slope.org
907-852-0350