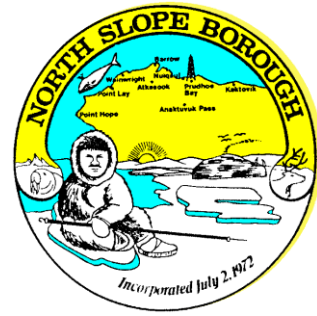


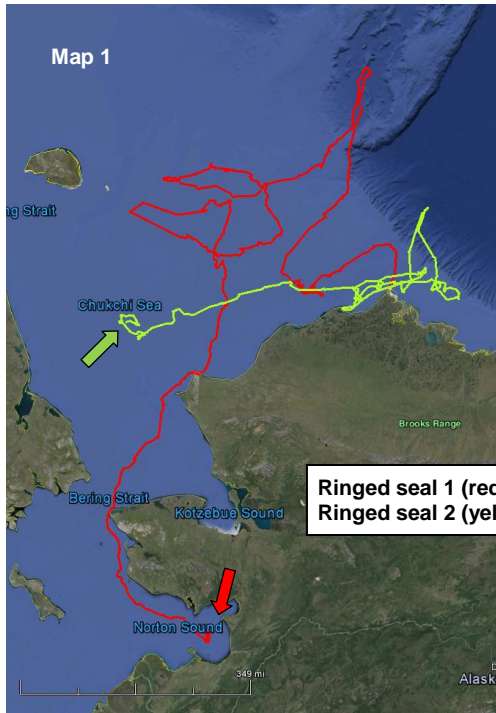
# NORTH SLOPE BOROUGH

## Department of Wildlife Management

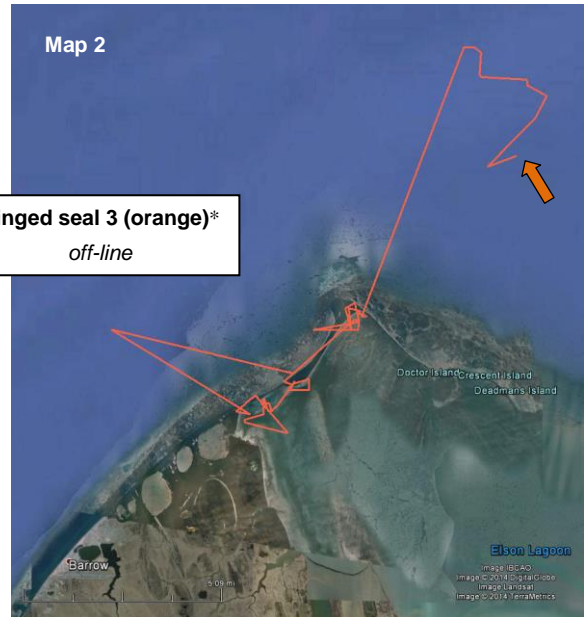


### Seal Baseline Study (NMFS Permit #15324)

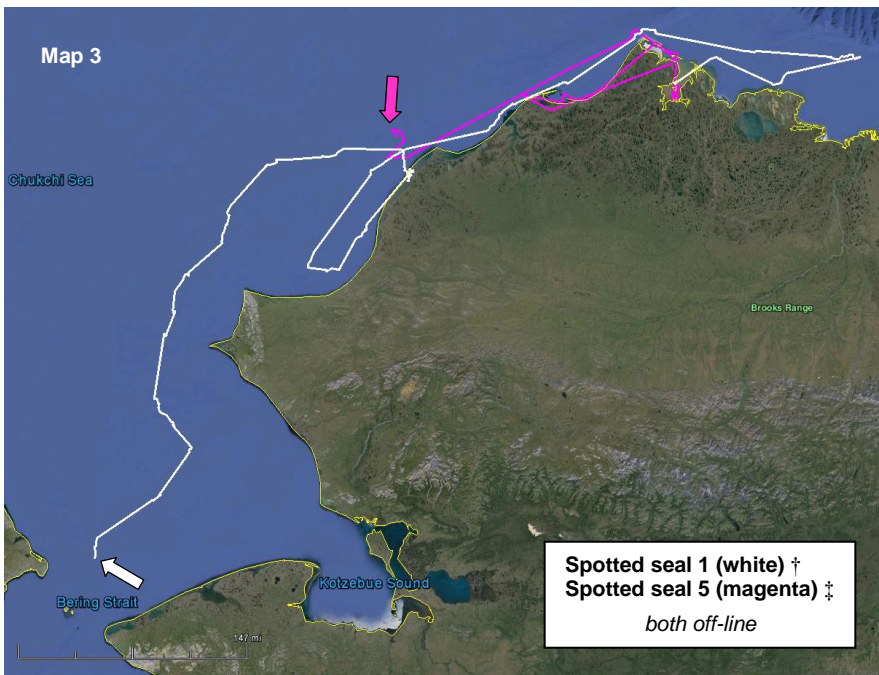
#### Map 11 Locations as of October 3, 2014



**Ringed seal 1 (red)**  
**Ringed seal 2 (yellow-green)**



**Ringed seal 3 (orange)\***  
*off-line*



**Spotted seal 1 (white) †**  
**Spotted seal 5 (magenta) ‡**  
*both off-line*

**Map 1:**  
**Ringed seal 1 (adult ♂)**  
Tagged on 21-July, 2014  
Distance travelled to date ≈ 5,500 km

**Ringed seal 2 (sub-adult ♂)**  
Tagged on 22-July, 2014  
Distance travelled to date ≈ 2,700 km

**Map 2:**  
**Ringed seal 3 (juvenile ♀)**  
Tagged on 30-Aug, 2014  
Large northwestern deflection out of Elson Lagoon into the Chukchi Sea is due to a low quality satellite location.  
*\*Last known location transmitted on 3-Sept, 2014.*

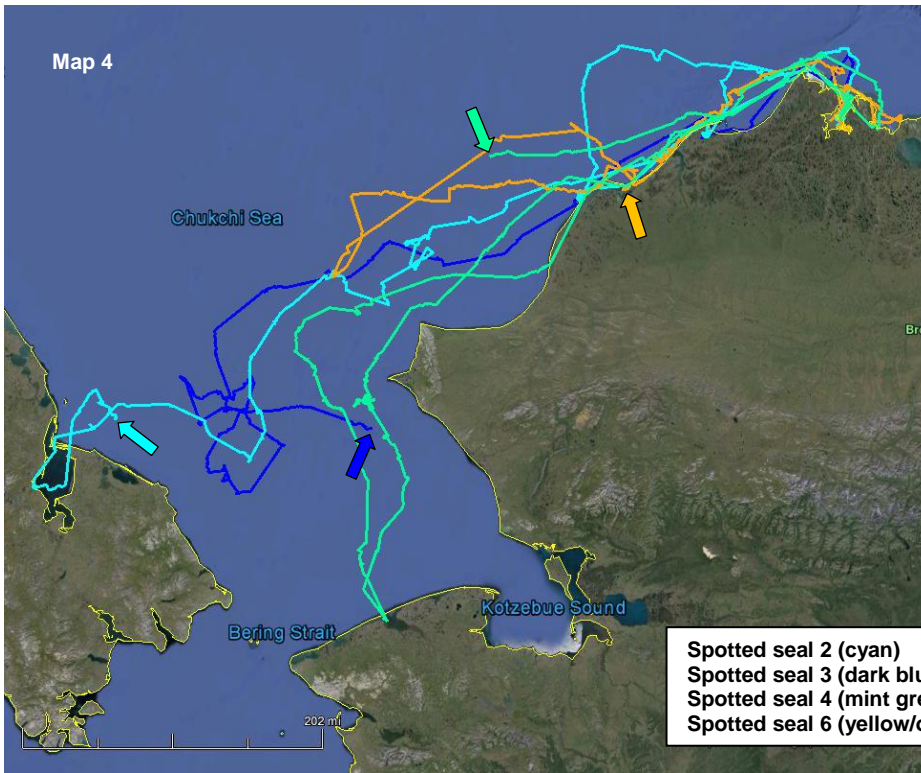
**Map 3:**  
**Spotted seal 1 (sub-adult ♂)**  
Tagged on 29-July, 2014  
Total distance ≈ 1,950 km, †ended 1-Sept, 2014

**Spotted seal 5 (juvenile ♂)**  
Tagged on 18-Aug, 2014  
Total distance ≈ 880 km, ‡ended 10-Sept, 2014

Contact

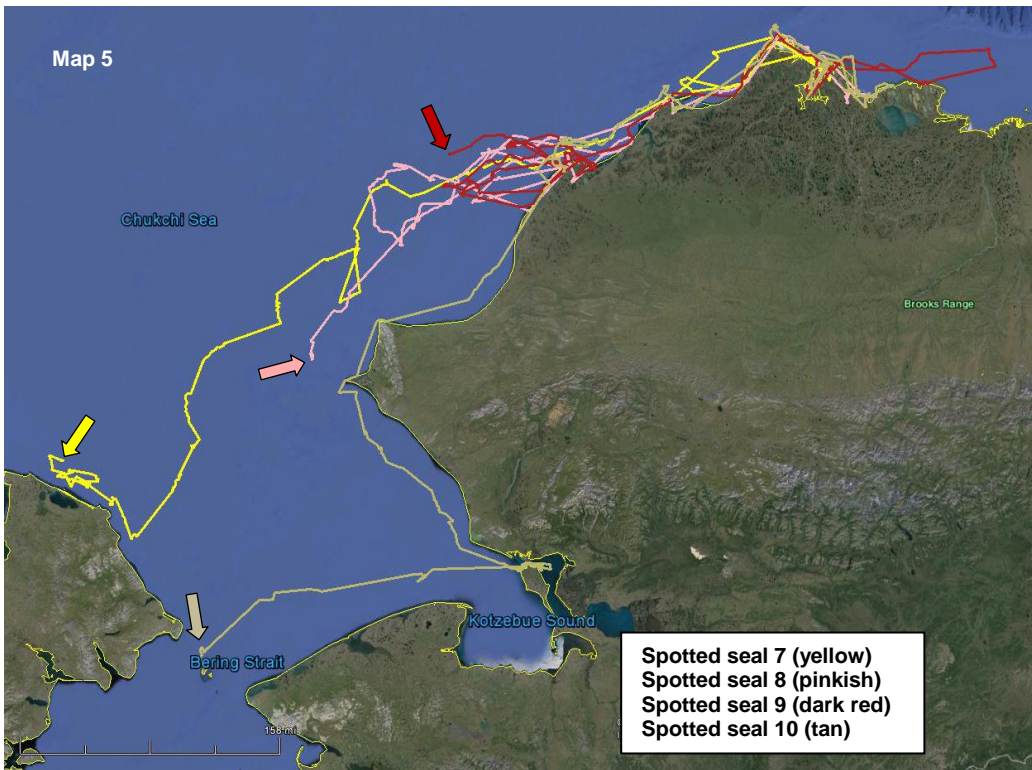
Andy Von Duyke  
Wildlife Biologist

[andrew.vonduyke@north-slope.org](mailto:andrew.vonduyke@north-slope.org)  
907-852-0350



Map 4:

- Spotted seal 2** (sub-adult ♂)  
Tagged on 31-July, 2014  
Distance travelled to date ≈ 3,000 km
- Spotted seal 3** (sub-adult ♂)  
Tagged on 18-Aug, 2014  
Distance travelled to date ≈ 2,100 km
- Spotted seal 4** (sub-adult ♂)  
Tagged on 18-Aug, 2014  
Distance travelled to date ≈ 3,000 km
- Spotted seal 6** (adult ♂)  
Tagged on 18-Aug, 2014  
Distance travelled to date ≈ 2,100 km



Map 5:

- Spotted seal 7** (sub-adult ♀)  
Tagged on 19-Aug, 2014  
Distance travelled to date ≈ 2,100 km
- Spotted seal 9** (sub-adult ♀)  
Tagged on 19-Aug, 2014  
Distance travelled to date ≈ 2,200 km
- Spotted seal 8** (sub-adult ♂)  
Tagged on 18-Aug, 2014  
Distance travelled to date ≈ 2,000 km
- Spotted seal 10** (adult ♂)  
Tagged on 22-Aug, 2014  
Distance travelled to date ≈ 2,300 km

Contact

Andy Von Duyke  
Wildlife Biologist

[andrew.vonduyke@north-slope.org](mailto:andrew.vonduyke@north-slope.org)  
907-852-0350