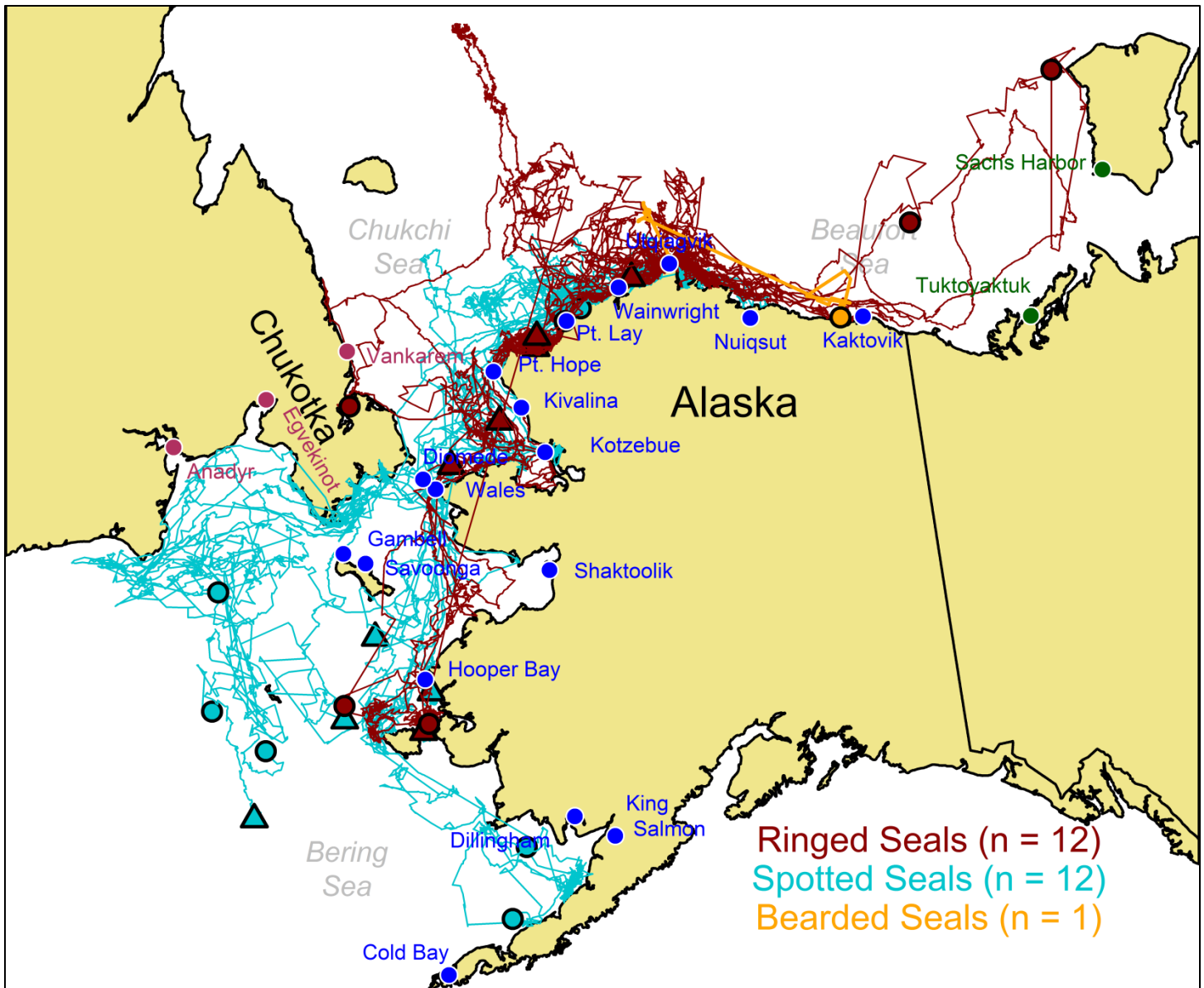




NORTH SLOPE BOROUGH

Department of Wildlife Management

Map 2016-17_#11
Ice Seal Baseline Study
(NMFS Permit #15324)
May 2, 2017



Males are indicated by triangles (▲) and females are indicated by circles (●).

Map archives and more information are available on our webpage (www.north-slope.org/departments/wildlife-management/studies-and-research-projects/ice-seals/ringed-seal-research). Seal research conducted under NMFS permit #15324 and Animal Care and Use Committee Protocol #2016-23.

Funding provided by the Collaborative Alaskan Arctic Studies Program (CAASP) and the Office of Naval Research (ONR).

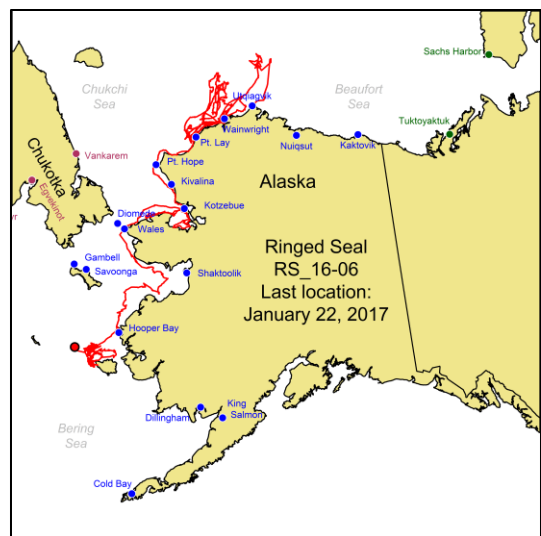
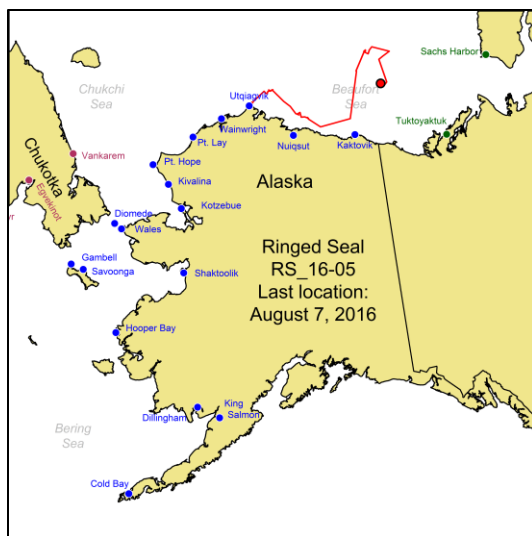
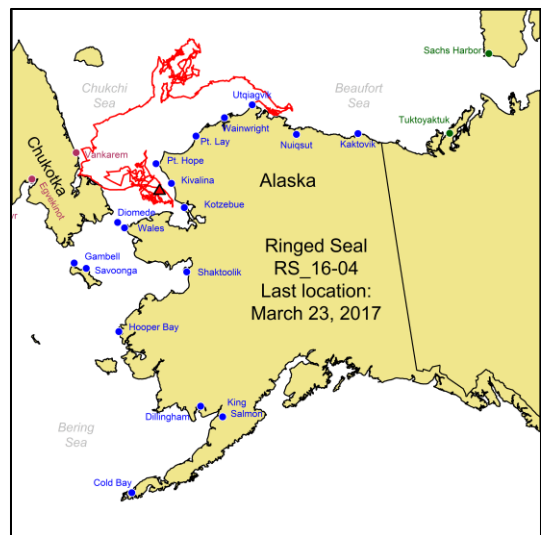
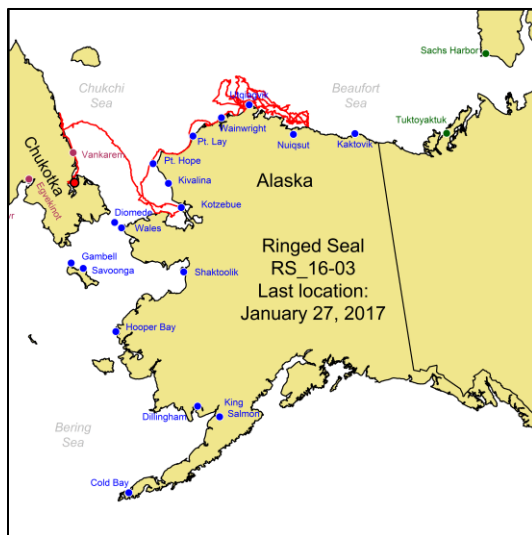
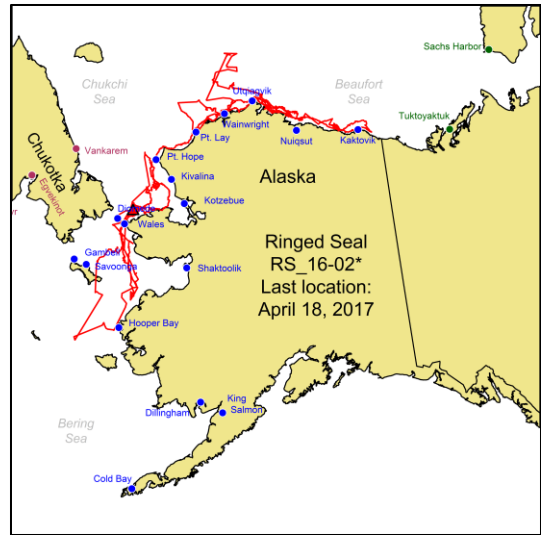
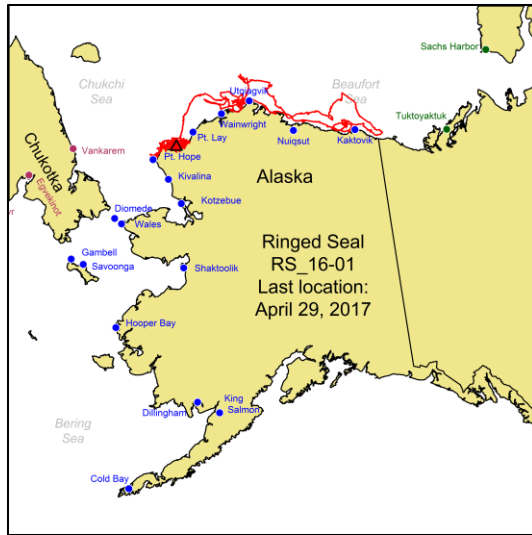
*CTD transmitter provided by ADFG as part of a collaborative project with our department.



NORTH SLOPE BOROUGH

Department of Wildlife Management

Map 2016-17_#11
Ice Seal Baseline Study
(NMFS Permit #15324)
May 2, 2017

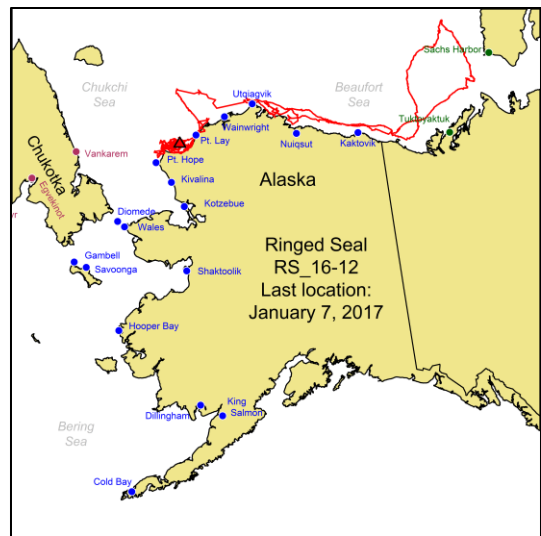
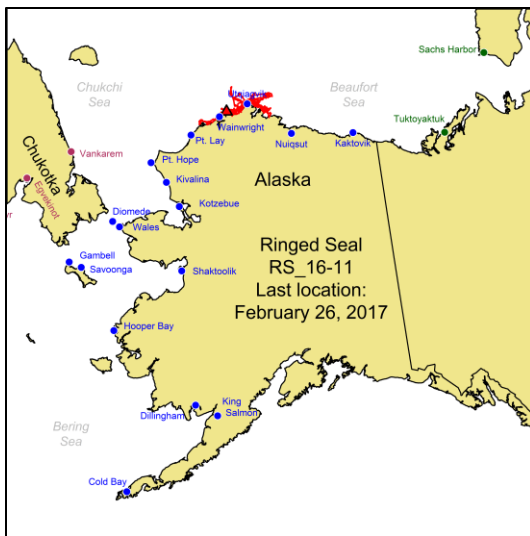
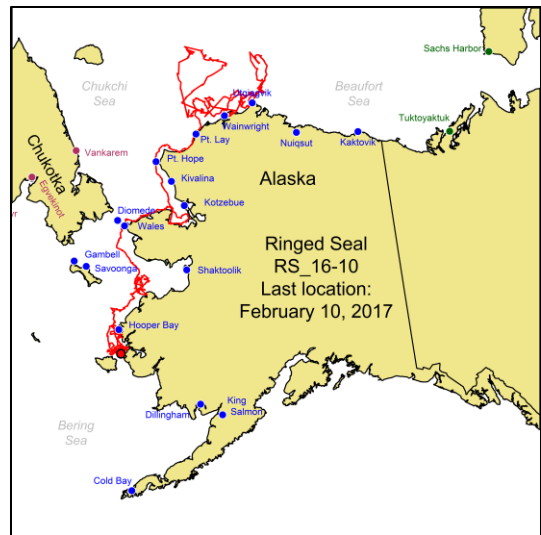
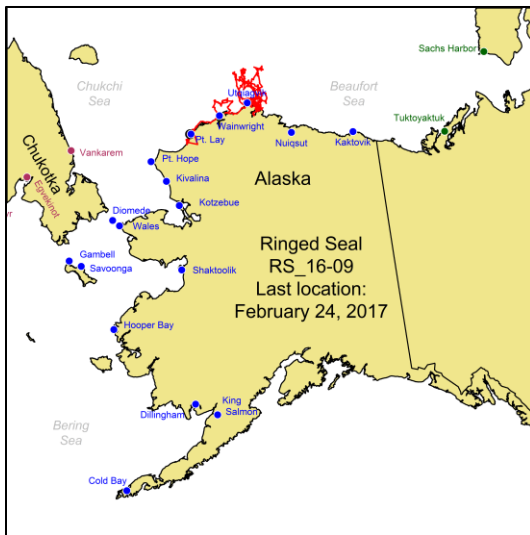
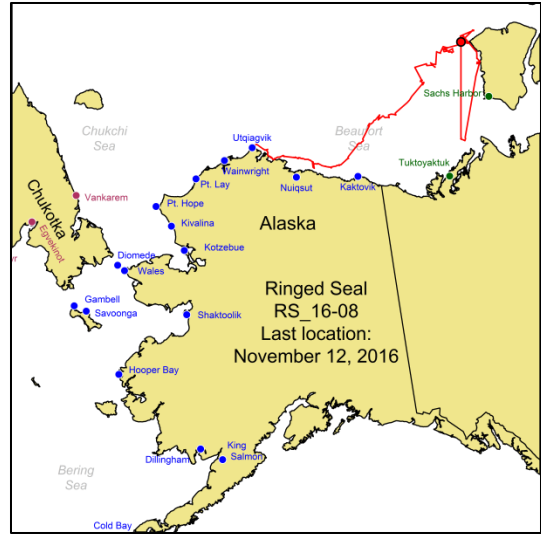
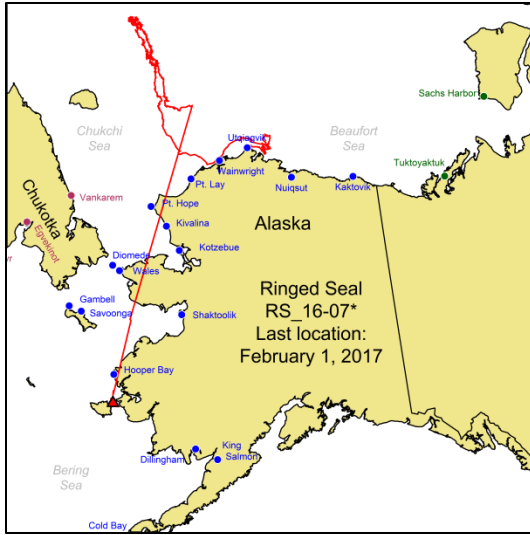




NORTH SLOPE BOROUGH

Department of Wildlife Management

Map 2016-17_#11
Ice Seal Baseline Study
(NMFS Permit #15324)
May 2, 2017

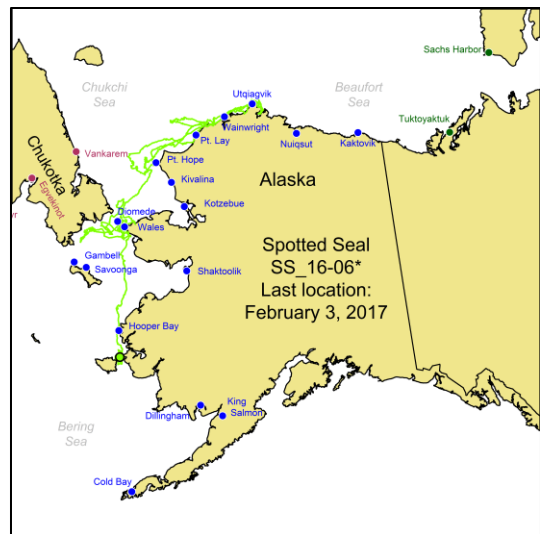
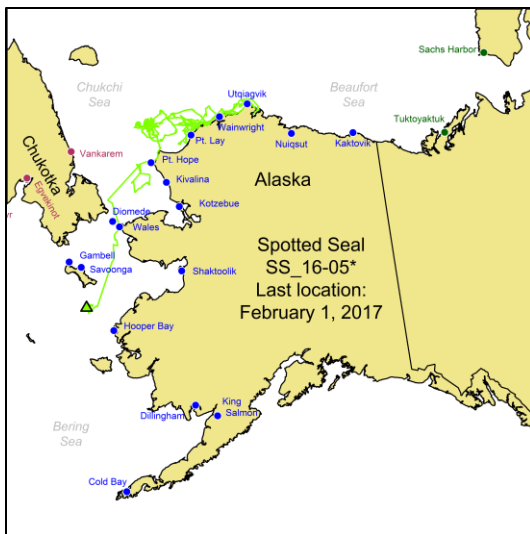
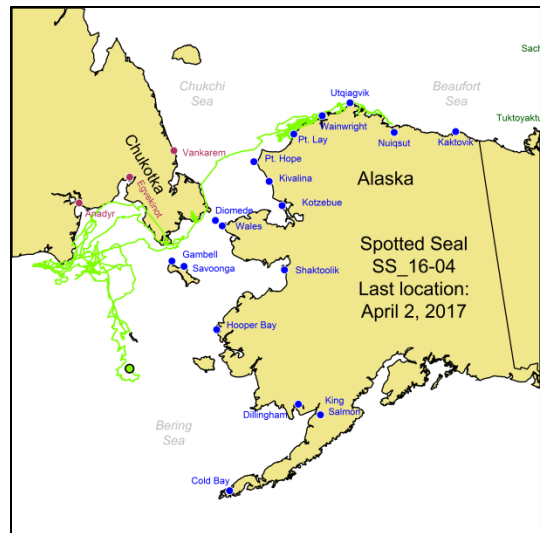
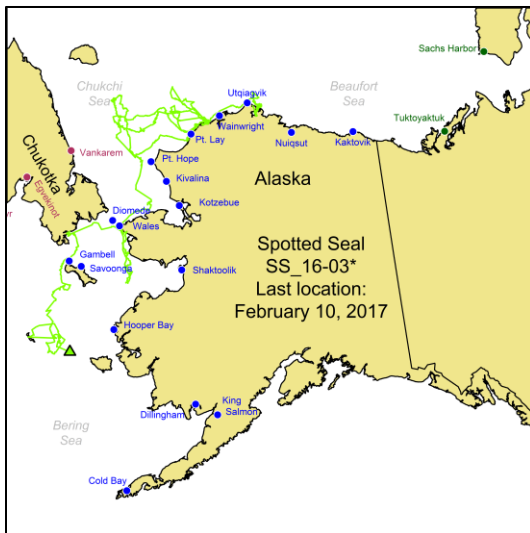
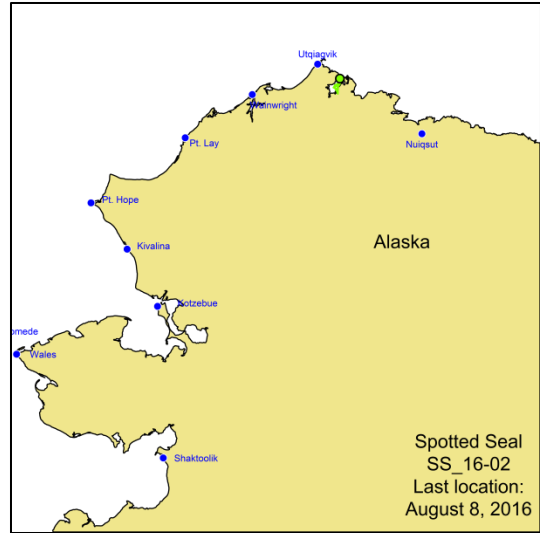
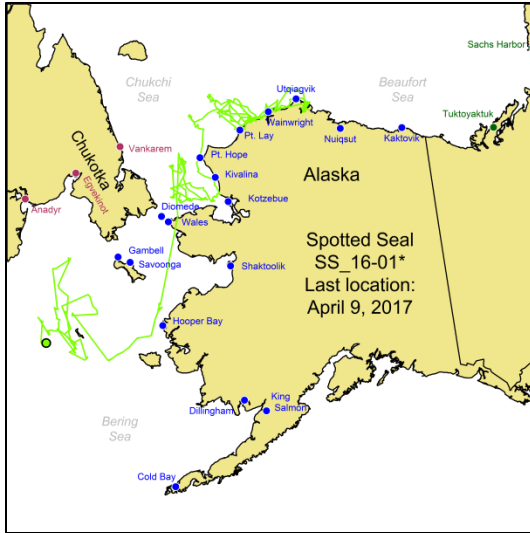




NORTH SLOPE BOROUGH

Department of Wildlife Management

Map 2016-17_#11
Ice Seal Baseline Study
(NMFS Permit #15324)
May 2, 2017

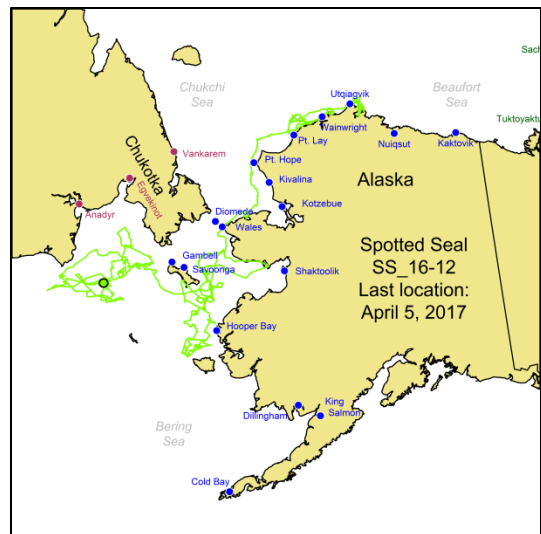
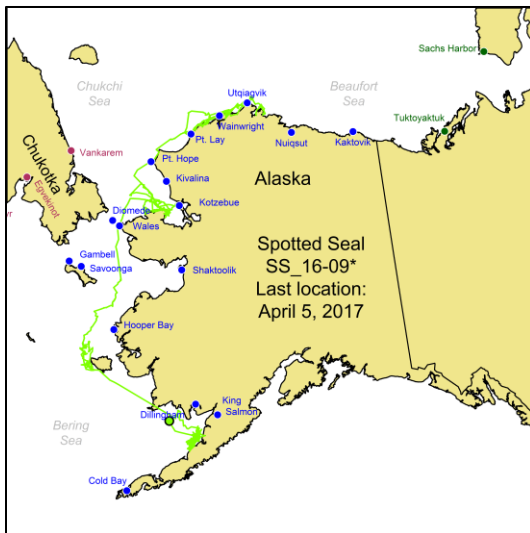
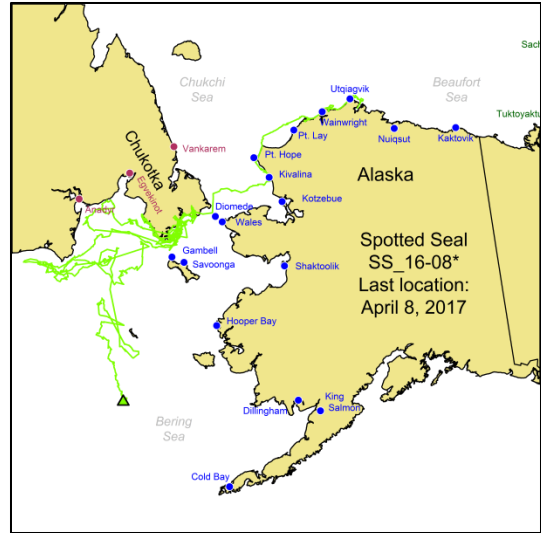




NORTH SLOPE BOROUGH

Department of Wildlife Management

Map 2016-17_#11
Ice Seal Baseline Study
(NMFS Permit #15324)
May 2, 2017

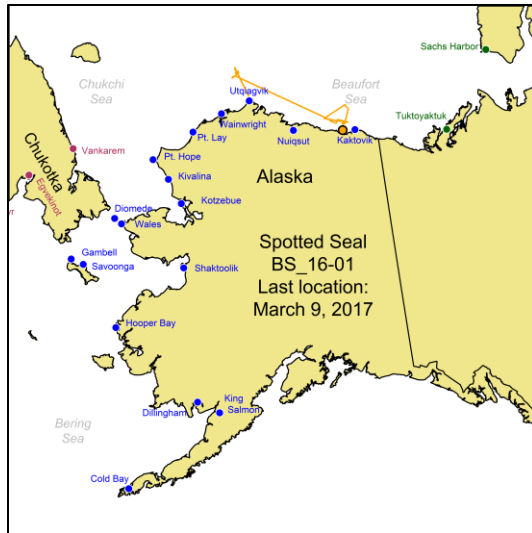




NORTH SLOPE BOROUGH

Department of Wildlife Management

Map 2016-17_#11
Ice Seal Baseline Study
(NMFS Permit #15324)
May 2, 2017



BEARDED SEAL (n = 1, female)

Tagged on 15-Aug, 2016 at the opening of North Salt Lagoon in Utqiagvik, AK. Map shows seal movements and latest locations. Note that seal BS_16-01 was molting its fur when it was captured. Therefore, we were only able to tag it with a flipper tag. Flipper tags transmit only when the seal has hauled out of the water, either on land or on ice.



Photo: Aaron Morris