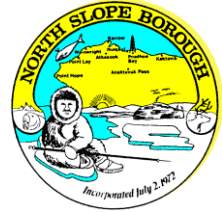


# NORTH SLOPE BOROUGH

## Department of Wildlife Management



Map 2016-17\_01      Ice Seal Baseline Study (NMFS Permit #15324)

Hello,

On July 1<sup>st</sup> and 2<sup>nd</sup>, 2016, we captured and tagged a total of 12 ringed seals (*Pusa hispida*) in the vicinity of Barrow, AK.

Each seal was fit with two satellite transmitters. The following maps show the movements of each seal tagged, with the points indicating the daily location. Note that males are indicated by triangles and females are indicated by circles.

The tagging team consisted of staff from the North Slope Borough Department of Wildlife Management (NSB-DWM) and from the Arctic Marine Mammal Program at the Alaska Department of Fish and Game (ADFG-AMMP).

Two ringed seals (#16-02 and #16-07) were tagged with CTD transmitters provided by ADFG as part of a collaborative project. As such, their locations will be reported on maps from both NSB-DWM and ADFG-MMP.

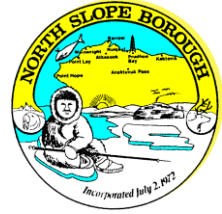
Funding for this work was provided by the Collaborative Alaskan Arctic Studies Program (CAASP; formerly the Shell Baseline Studies Program) and the Office of Naval Research (ONR).

An archive of all maps, as well as additional information about this project, is available on our webpage ([www.north-slope.org/departments/wildlife-management/studies-and-research-projects/ice-seals/ringed-seal-research](http://www.north-slope.org/departments/wildlife-management/studies-and-research-projects/ice-seals/ringed-seal-research)). Seal research is conducted under NMFS permit #15324 and under an approved Animal Care and Use Committee Protocol #2015-25.

Best regards,  
Andy Von Duyke

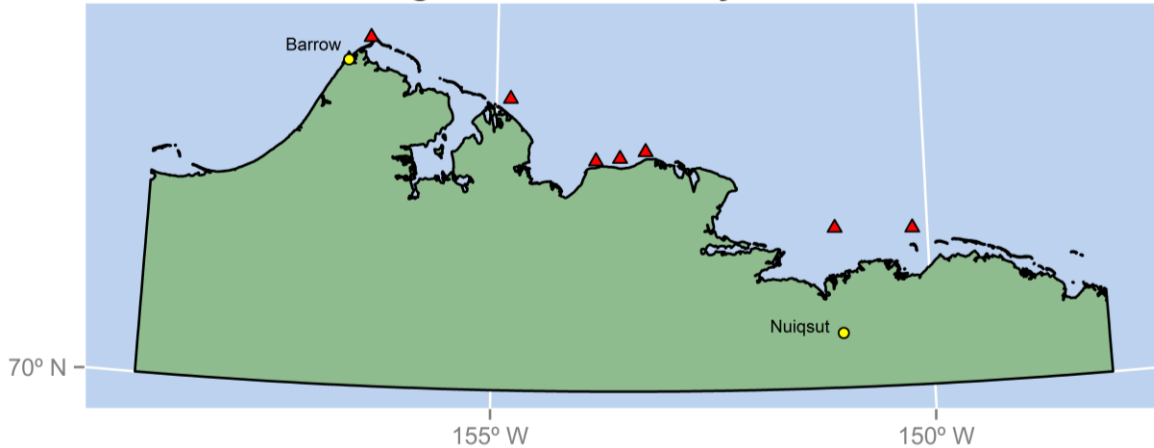
# NORTH SLOPE BOROUGH

Department of Wildlife Management

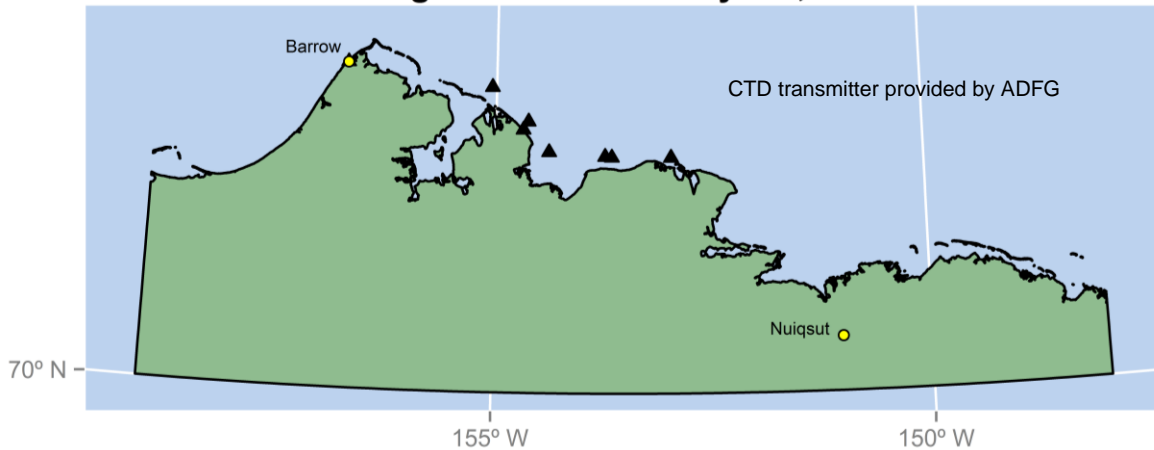


Map 2016-17\_01 Ice Seal Baseline Study (NMFS Permit #15324)

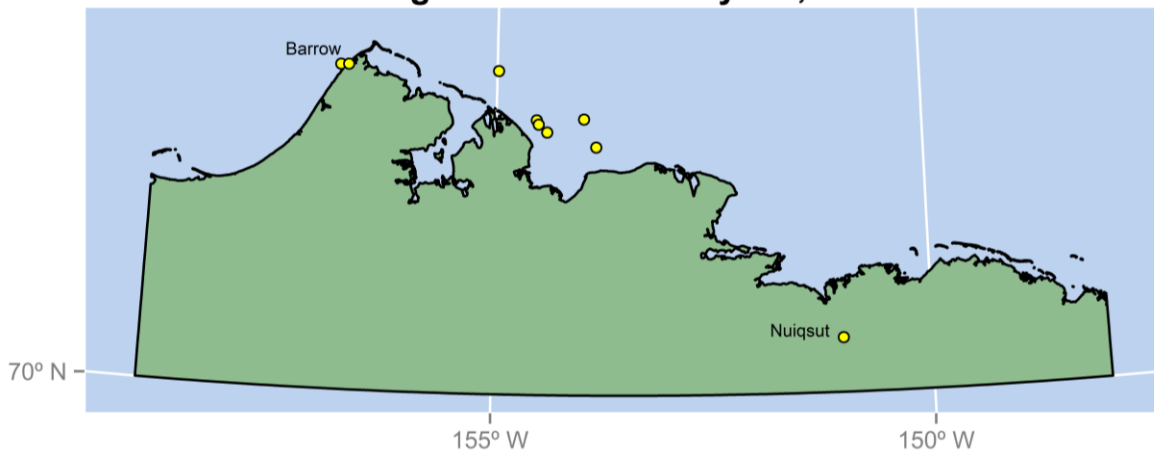
### Ringed seal 16-01: July 1-8, 2016



### Ringed seal 16-02: July 1-8, 2016



### Ringed seal 16-03: July 1-8, 2016

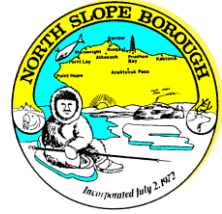


Contact

Andy Von Duyke [andrew.vonduyke@north-slope.org](mailto:andrew.vonduyke@north-slope.org)  
Wildlife Biologist 907-852-0350

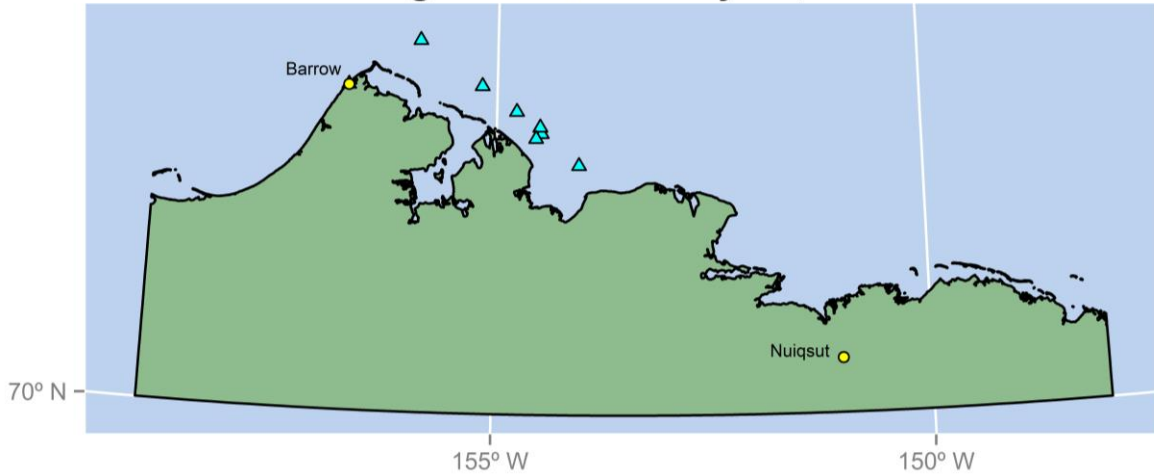
# NORTH SLOPE BOROUGH

## Department of Wildlife Management

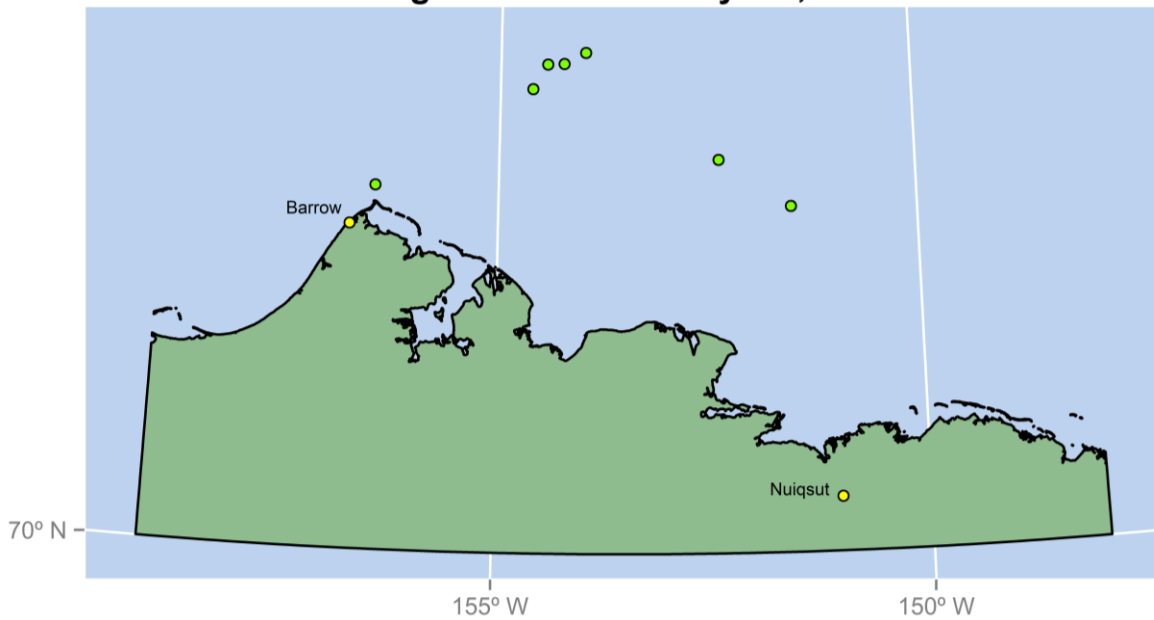


Map 2016-17\_01 Ice Seal Baseline Study (NMFS Permit #15324)

### Ringed seal 16-04: July 1-8, 2016



### Ringed seal 16-05: July 1-8, 2016

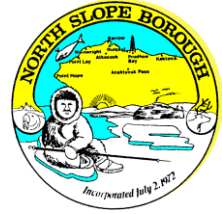


Contact

Andy Von Duyke [andrew.vonduyke@north-slope.org](mailto:andrew.vonduyke@north-slope.org)  
Wildlife Biologist 907-852-0350

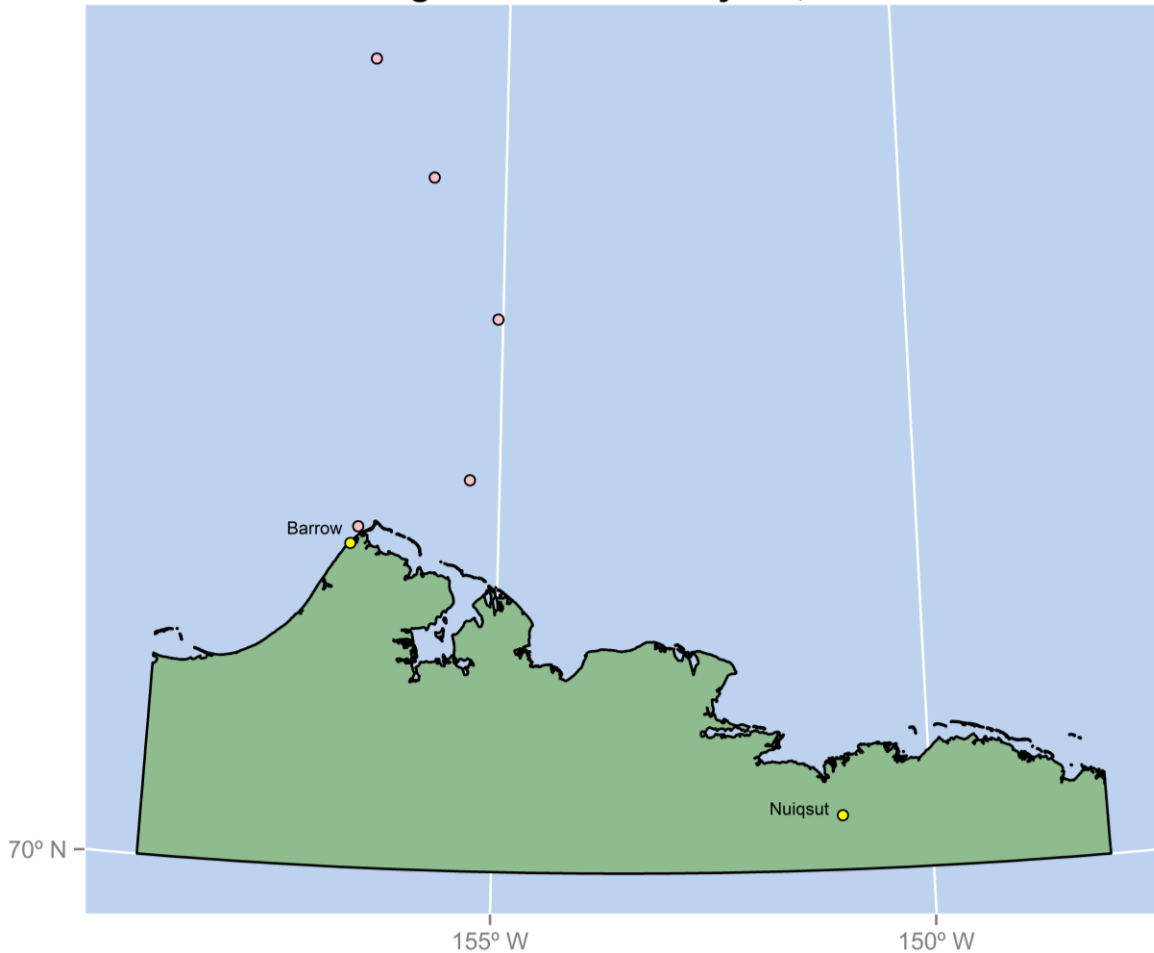
# NORTH SLOPE BOROUGH

## Department of Wildlife Management

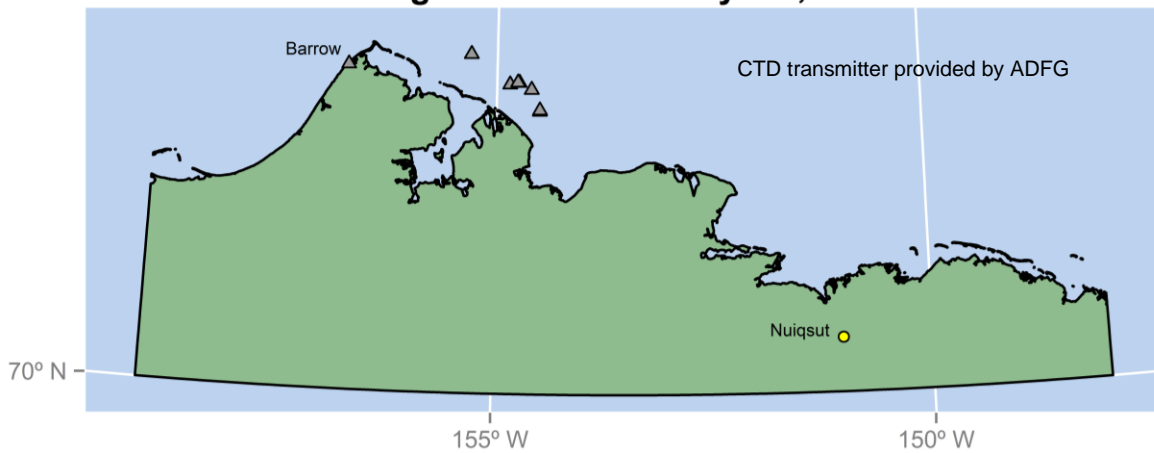


Map 2016-17\_01 Ice Seal Baseline Study (NMFS Permit #15324)

### Ringed seal 16-06: July 1-8, 2016



### Ringed seal 16-07: July 1-8, 2016

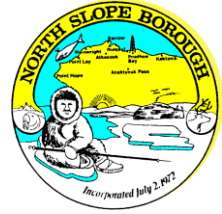


#### Contact

Andy Von Duyke [andrew.vonduyke@north-slope.org](mailto:andrew.vonduyke@north-slope.org)  
Wildlife Biologist 907-852-0350

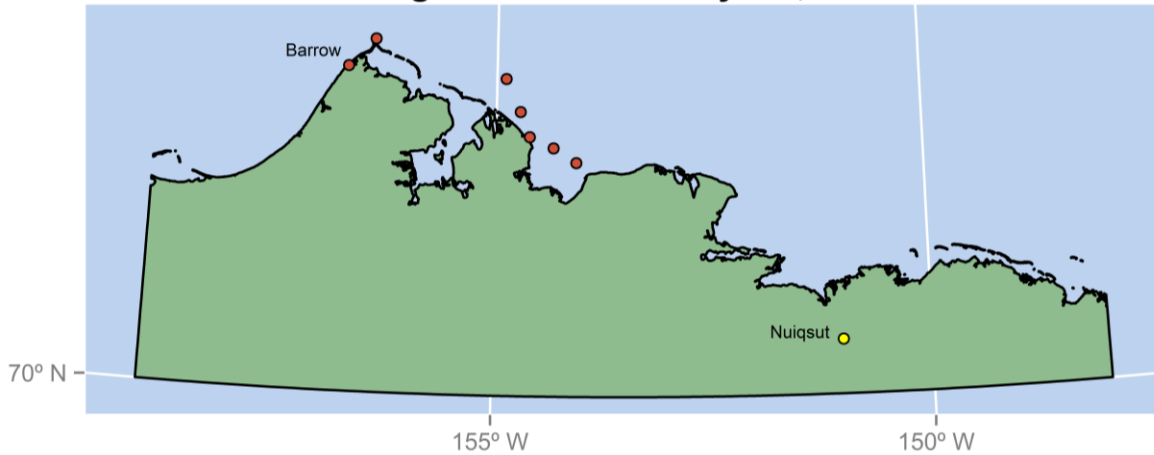
# NORTH SLOPE BOROUGH

Department of Wildlife Management

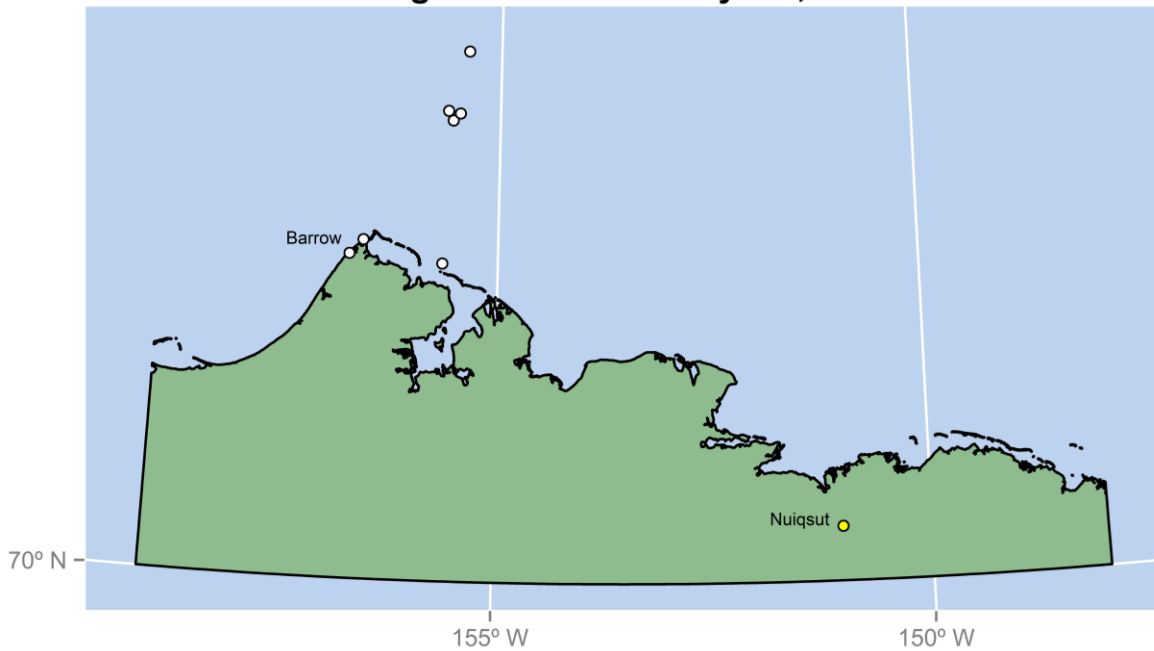


Map 2016-17\_01 Ice Seal Baseline Study (NMFS Permit #15324)

### Ringed seal 16-08: July 1-8, 2016



### Ringed seal 16-09: July 1-8, 2016

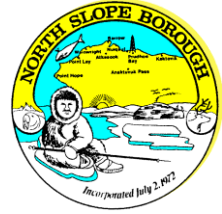


Contact

Andy Von Duyke [andrew.vonduyke@north-slope.org](mailto:andrew.vonduyke@north-slope.org)  
Wildlife Biologist 907-852-0350

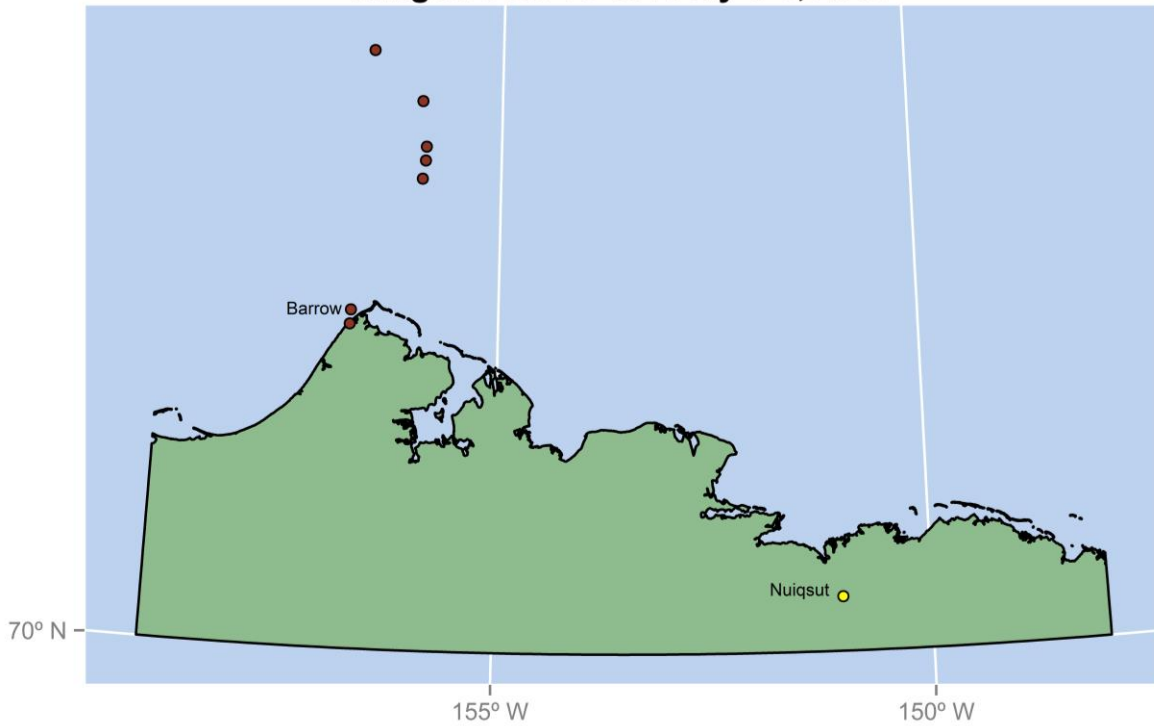
# NORTH SLOPE BOROUGH

## Department of Wildlife Management

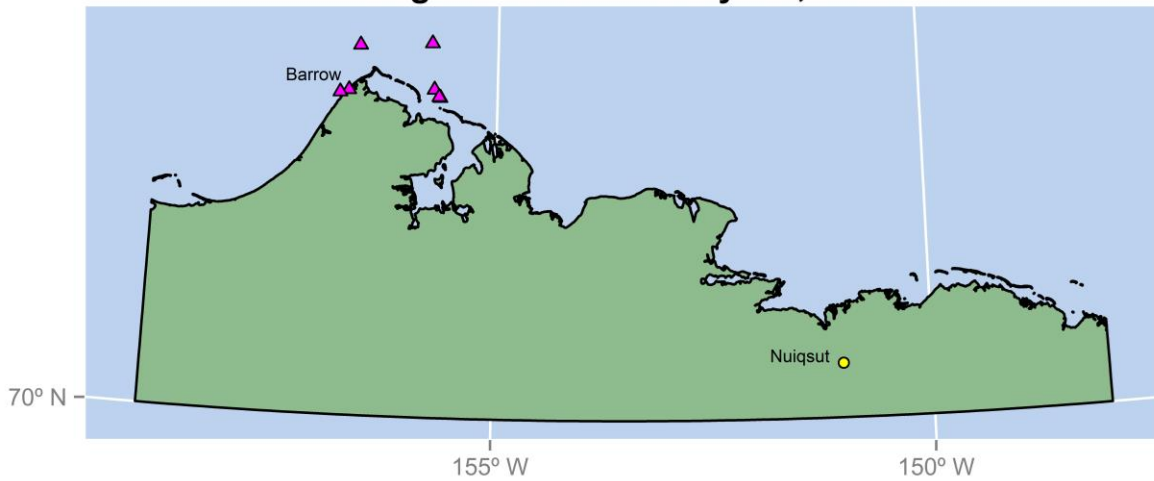


Map 2016-17\_01 Ice Seal Baseline Study (NMFS Permit #15324)

### Ringed seal 16-10: July 1-8, 2016



### Ringed seal 16-11: July 1-8, 2016

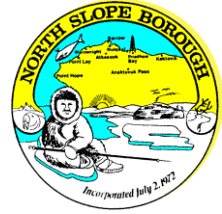


Contact

Andy Von Duyke [andrew.vonduyke@north-slope.org](mailto:andrew.vonduyke@north-slope.org)  
Wildlife Biologist 907-852-0350

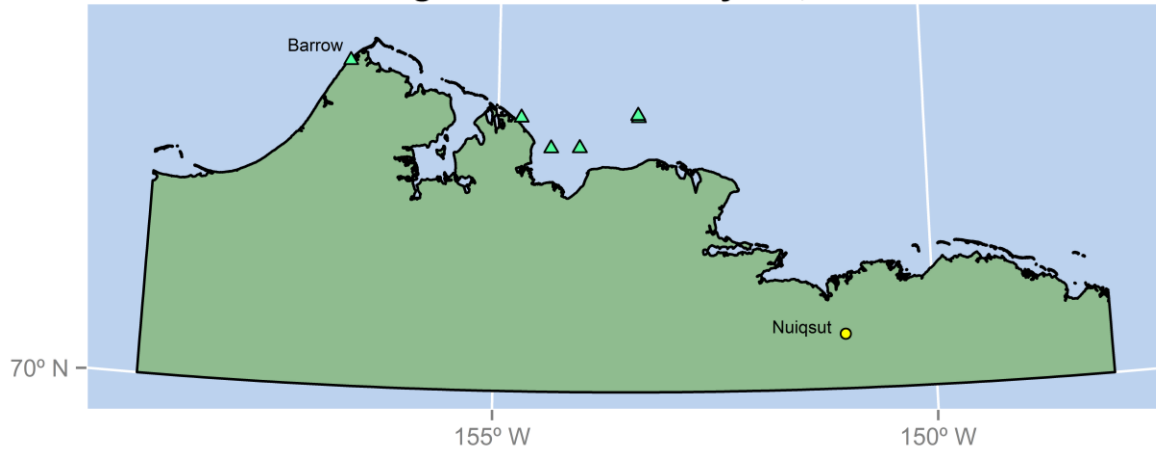
# NORTH SLOPE BOROUGH

## Department of Wildlife Management



Map 2016-17\_01      Ice Seal Baseline Study (NMFS Permit #15324)

### Ringed seal 16-12: July 1-8, 2016



Contact

Andy Von Duyke      [andrew.vonduyke@north-slope.org](mailto:andrew.vonduyke@north-slope.org)  
Wildlife Biologist      907-852-0350