

NSB Department of Wildlife Management
Kuk River, Wainwright
Fish Survey
Dates: 26 June – 11 July 2011

Co-Principal Investigators: Craig George, Todd Sformo, NSB Dept Wildlife Management

Chief Scientists: William Morris, Alaska Dept of Fish and Game, Habitat Division

Lawrence Moulton, MJM Research

Field Support/Data Analysis: John Seigle, ABR, Inc.

Barrow contact: Cyd Hanns, NSB DWM @ cyd.hanns@north-slope.org or 907-852-0350

Project summary

The Kuk is one of the larger rivers flowing into the Chukchi Sea on the North Slope of Alaska that has never been adequately surveyed to document species present and habitat conditions. Residents of Wainwright use the fish resources within the river system. The river is likely to be crossed by pipelines connecting any Chukchi development to the Trans-Alaska Pipeline System (TAPS). Industry is also interested in the possibility of dredging the lower Kuk to allow staging of large vessels.

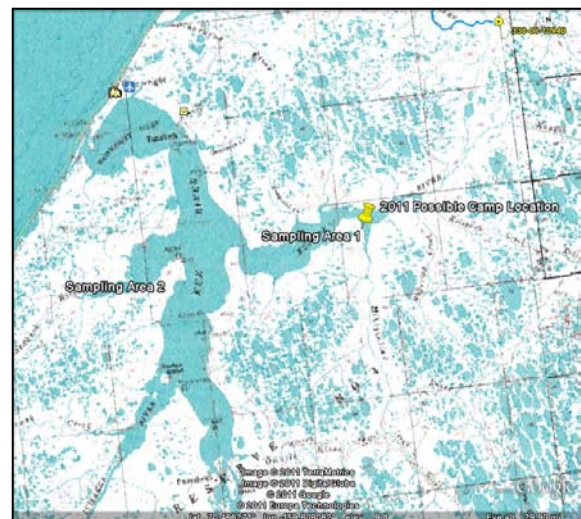
The NSB Dept. of Wildlife Management is collaborating on a survey of fish and habitat conditions in the Kuk this summer. The need and interest in this fish work has been expressed and discussed at various meetings between DWM staff, residents of Wainwright, and NSB Fish & Game Committee members.

The field crew plan to be doing the following:

- Helicopter and boat to camp site
- Work 2 areas, travel by inflatable boat (see map for possible working location)
- Survey fish using: Live capture & release nets: fyke nets, seines and minnow traps
Gill nets & angling (rod & reel)
- Document basic fish data
- Document basic water quality data.
Collect some river bottom sediment samples.
- Collect aquatic invertebrate and other samples

Some fish will be collected for hydrocarbon & general health analysis.

Analysis of the information gathered will allow us better understand: age/weight relationships, sampled population size and age structure, age at maturity; we will have baseline data for reference and help with making further research plan decisions.



**Possible fish study field crew camp
and work sites**

Please call if you have suggestions, questions, or concerns at 907-852-0350.