

Bowhead Coastal Observation Project – 2010-2013

Chukotka - Hunter/Community Collaboration

PRELIMINARY

NPS Shared Beringian Program/NSB Dept. of Wildlife Management/ATMMHC/POI

Pacific Oceanological Institute
(POI)

Far Eastern Branch

Russian Academy of Sciences

Baltiyskaya, 43

Vladivostok, Russia 690041

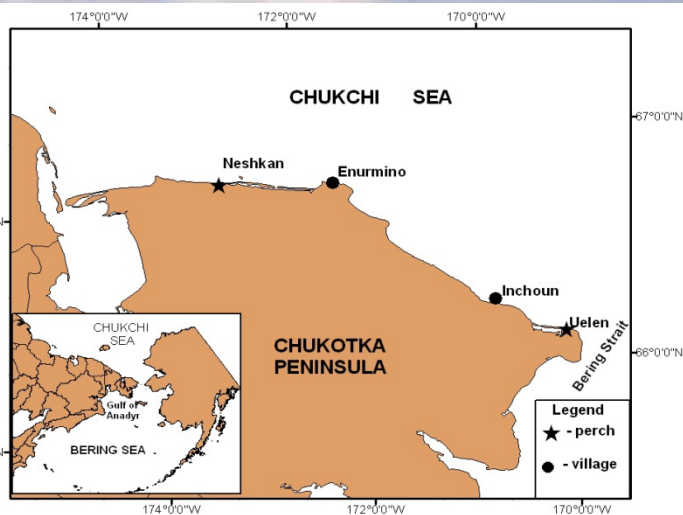
Vladimir Melnikov -- Senior
Scientist,

Association of Traditional
Marine Mammal Hunters of
Chukotka (ATMMHC)

Polarnaya, 20-14 Anadir, Russia.
689000

Eduard Zdor - Executive
secretary

*Results of the Bowhead Whale
Observations in the
Chukchi Peninsula in 2010-2012
for North Slope Borough
Department of Wildlife
Management Vladimir Melnikov,
Eduard Zdor April 2013*



- **Spring migration in Bering occurs mid May - mid June**

- **Fall migration off Chukchi begins before ice forms, characterized by great variability affected by ice dynamics**

- **Bowheads occur regularly in the Chukchi in summer**

- **Bowheads observed feeding in Chukchi Peninsula**

- **Hunters observations similar to results associated with research projects**

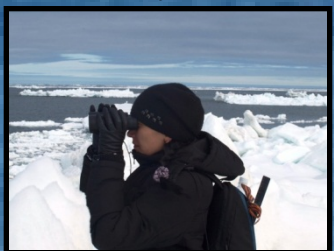
Some of the observers:



Artur Apalyu



Rodion Rinetegin

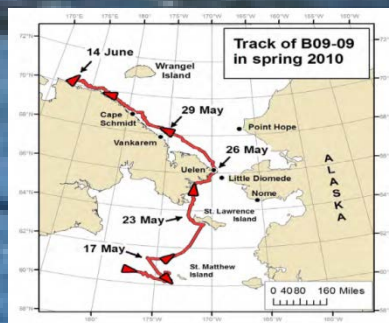


Maria Panauge

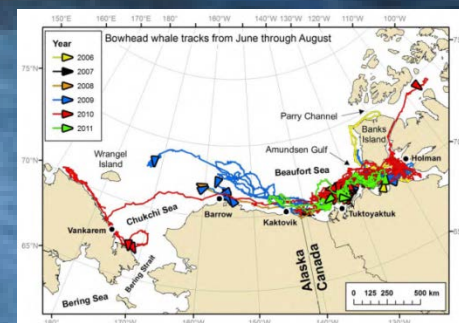


Yakov Vukvutagin

Concurrent tagged whale tracking: Quakenbush et al 2012



Track of tagged whale that did not migrate through the Beaufort Sea to Amundsen Gulf (2010)



Summer (June-August) movements of tagged whales in 2006, 2008, 2009